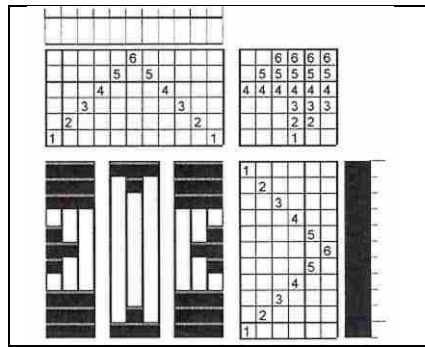


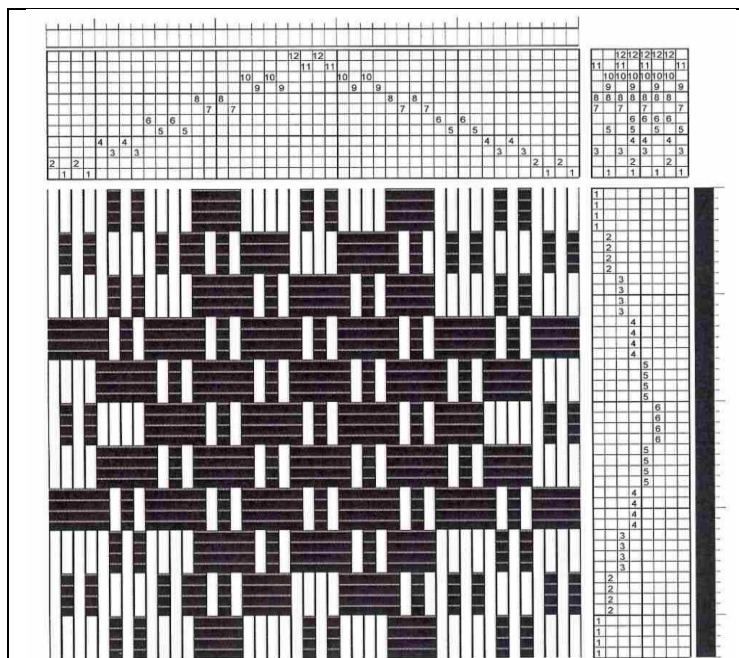
Star Work Coverlets  
Gay McGeary  
[gomcgeary@coverletweaver.com](mailto:gomcgeary@coverletweaver.com)  
[www.coverletweaver.com/](http://www.coverletweaver.com/)

Threading Systems - Star Work Coverlets

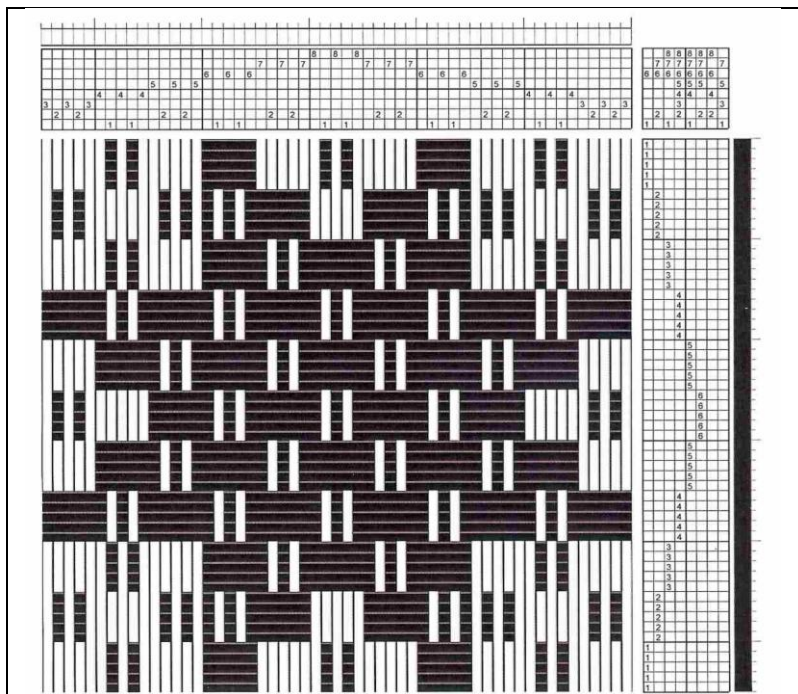
**Basic Star Block Design** - For comparison purposes, I am using a 6 block star motif.



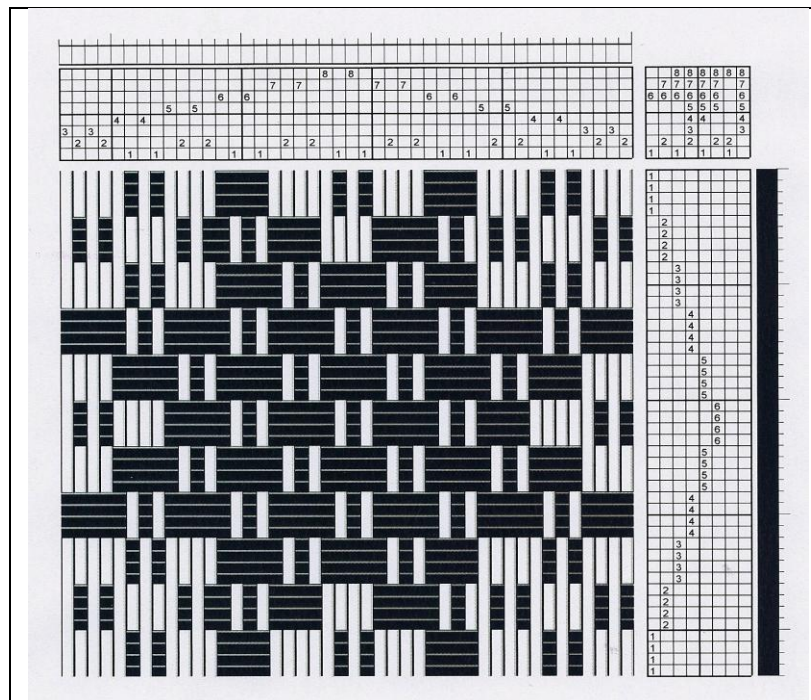
**Opposites** - Each pattern block is threaded on consecutive shafts which are in opposite sheds to the other pattern blocks.



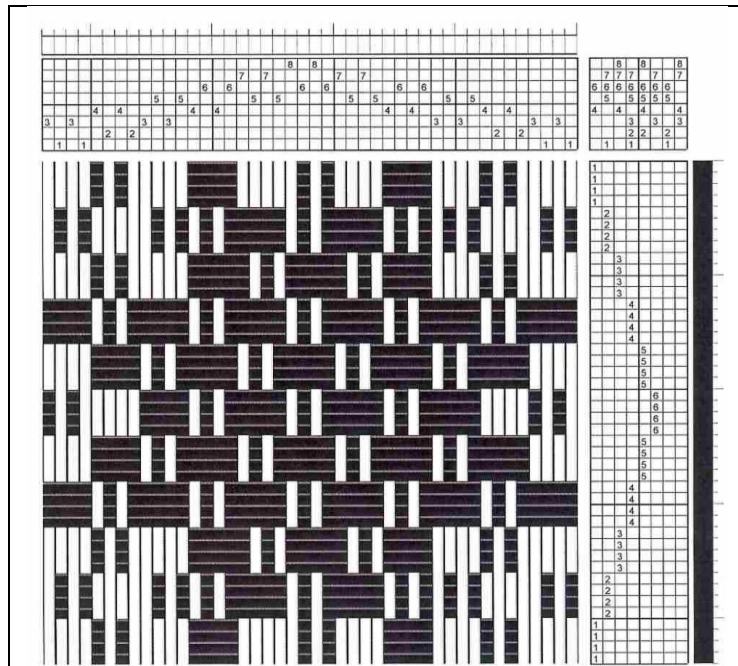
**Odd Tied** - Pattern shafts combined with alternate tie-down shafts, odd number of threads per unit in pattern block.



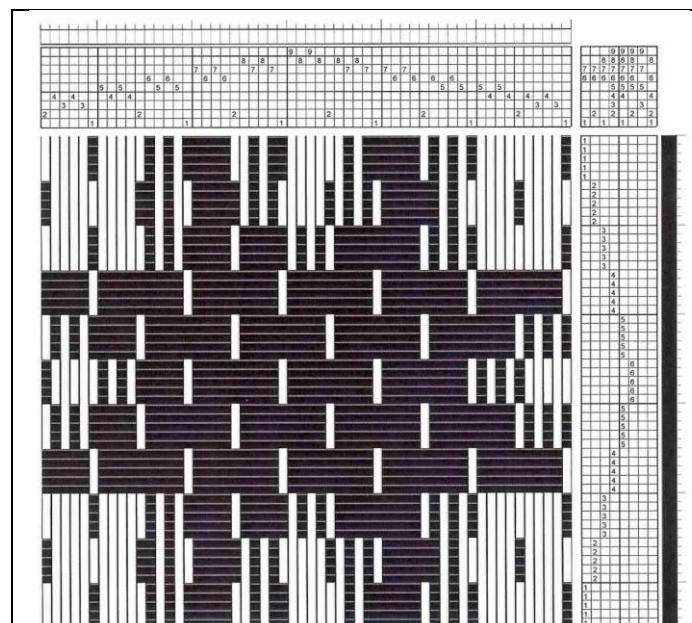
**Even Tied** - Pattern shafts combined with alternate tie-down shafts, even number of threads per unit in pattern block.



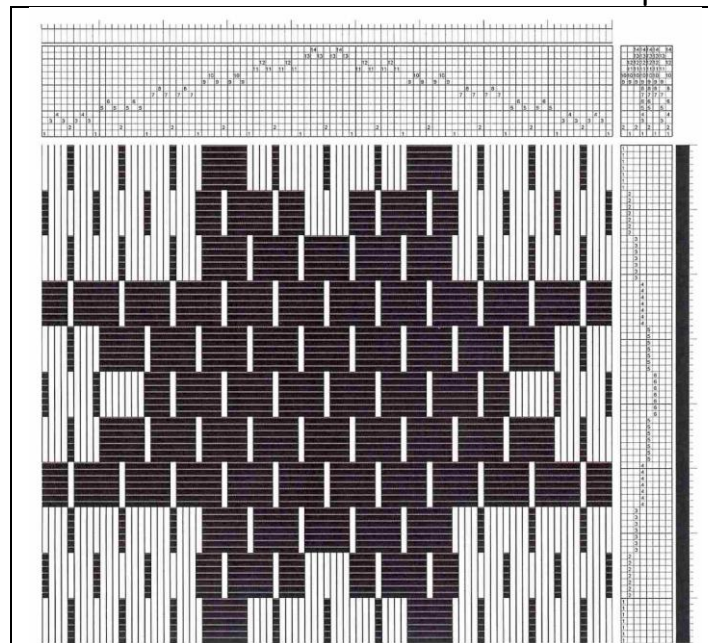
**Modified Opposites** - Each pattern block is threaded on nonconsecutive shafts. The two shafts are in an opposite shed to the other pattern blocks.



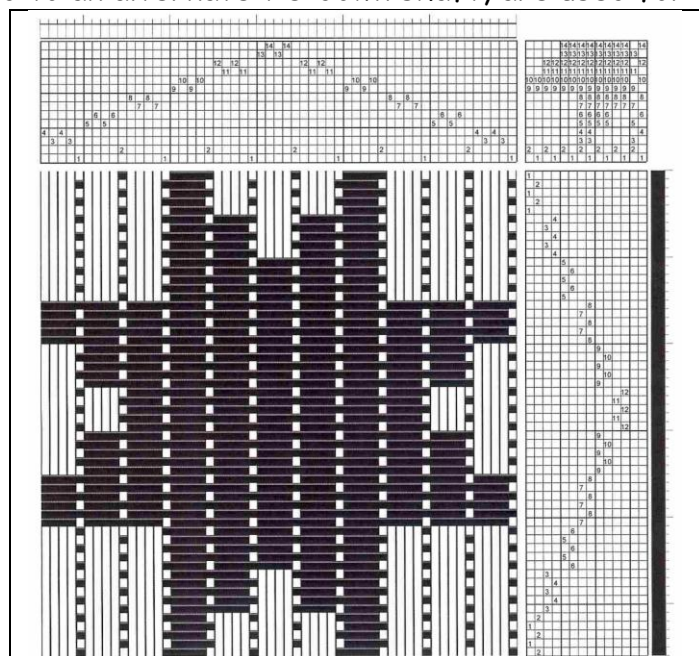
**Modified Opposites Tied** - Each pattern block is threaded on 2 consecutive shafts. One shaft overlaps the previous block and the other shaft overlaps the following block. Each group of threads on pattern shafts is separated by alternate tie-down shafts.



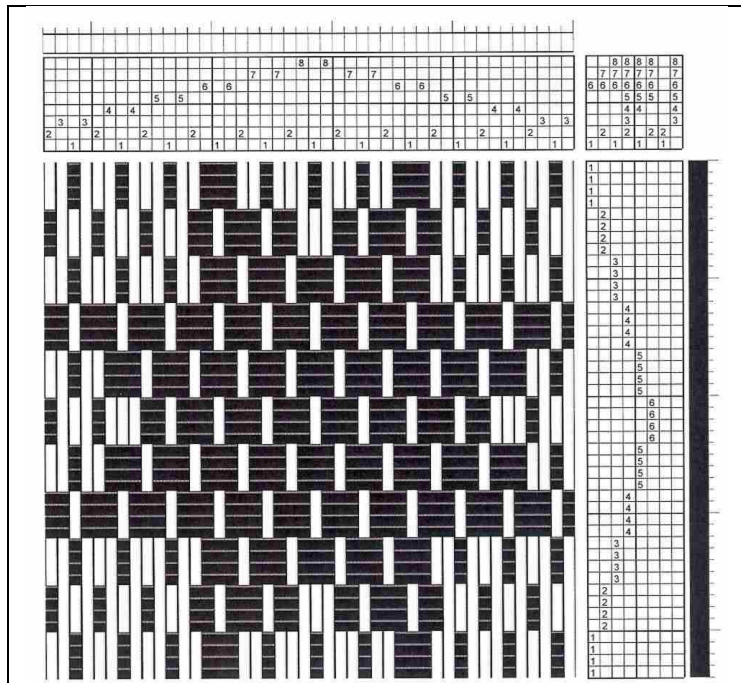
**Opposites Tied with One Treadle** - Each pattern block is threaded on consecutive shafts which are in opposite sheds to the other pattern blocks. Each group of threads on pattern shafts is separated by an alternate tie-down shaft. One treadle tied to an alternate tie-down shaft is used for each pattern block



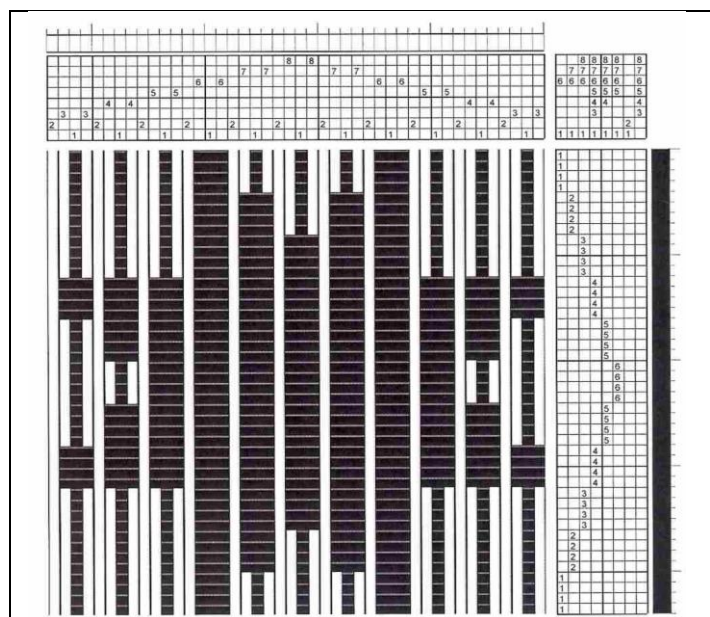
**Opposites Tied with Two Treadles** - - Each pattern block is threaded on consecutive shafts which are in opposite sheds to the other pattern blocks. Each group of threads on pattern shafts is separated by alternate tie-down shafts. Two treadles, each tied to an alternate tie-down shaft, are used for each pattern block.



**Even Tied Variation** - Each block is threaded on both tie-down shafts instead of alternating tie-down shafts, similar to a summer & winter threading.



**Even Tied Variation One Tie-Down** - Each pattern shaft is threaded with both a tie-down on shaft one and shaft two, similar to a summer & winter threading. However all the treadles are tied up to only one tie-down shaft.



## List of 19<sup>th</sup> Century Pennsylvania Weaver's Pattern Manuscripts with Star Work Drafts

Manuscript	County	Opposites	Odd Tied	Even Tied	Mod Opp	Mod Opp Tied	Opp Tied One Treadle	Opp Tied Two Treadle	Even Tied Variation	Even Tied Single Tie- Down
David Bender	Westmoreland	X	X	X	X					X
Henry Small	Franklin	X	X							
Christian Frey	Adams	X	X							
Jacob Biesecker	Adams	X	X							
Abraham Serff	York		X							
Heinrich Leisey	Lancaster	X	X							
Jacob Angstadt	Union		X		X	X		X		X
Cyrus Uhler	Lebanon	X	X							
Benjamin Delong	Berks			X		X				X
Benjamin Delong	Berks			X		X				X
Benjamin Endy	Berks	X	X		X					X
Christian Jacob Haske	Lehigh	X			X					
Dilman Kulp	Montgomery				X					

### Bibliography

Gordon, Judith. *American Star Works Coverlets*. New York: Design Books, 1995.

Hilts, Patricia. "Seventeenth and Eighteenth Century Twills: The German Linen Tradition." Winnipeg, Canada: ARS TEXTRINA, Vol. 3: 139-172, May 1985.

Holroyd, Ruth N. *Jacob Angstadt His Weavers Patron Book*. Pittsford, NY: Ruth N. Holroyd, 1976.

Holroyd, Ruth N. with Ulrike L. Beck. *Jacob Angstadt Designs Drawn from his Weavers Patron Book*. Pittsford, NY: Ruth N. Holroyd, 1976.

Holroyd, Ruth N. with Ulrike L. Beck. *Replica of an early 19th century manuscript with interpretation*. Pittsford, NY: Ruth N. Holroyd, 1992.

McGeary, Gay. "A Legacy of a Cumberland Star Coverlet." *Complex Weavers Journal*, #94: 32-35, October 2010.

McGeary, Gay. "Designing Star & Diamond Coverlets in the Pennsylvania German Tradition." *Complex Weavers Journal*, #84: 42-43, June 2007.

McGeary, Gay "Expanded Point Twill." *Interweave*, Vol. IV, number 3: 37-39, Summer, 1979.

McGeary, Gay. "My Master Class with David Bender." *Complex Weavers Journal*, #100: 15-18, October 2012.