

Nancy's 2006 Sample for
the Early American Coverlets & Counterpanes Study Group



Complex Weavers

Early American Coverlet Study Group

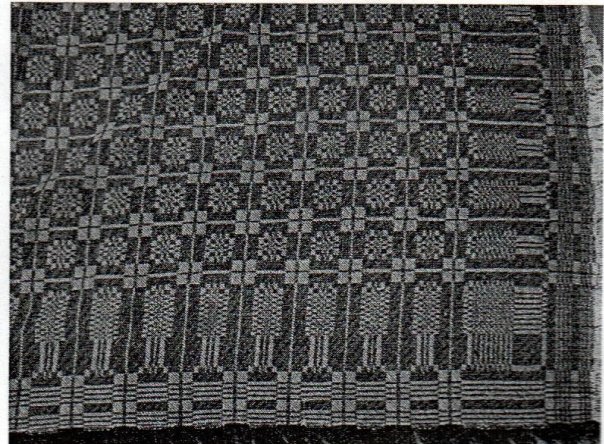
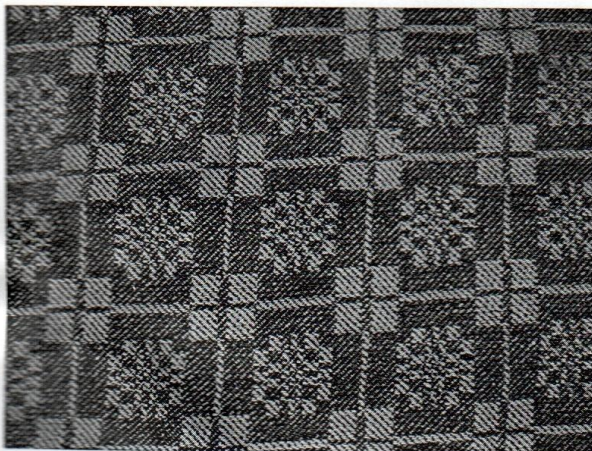
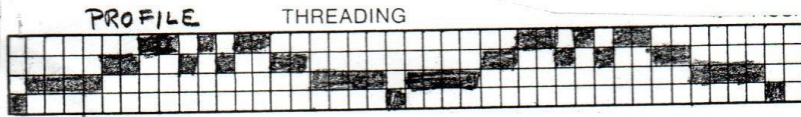
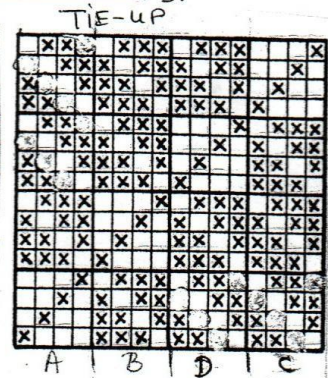
Name	<i>Nancy Rawson</i>
Address	<i>PO Box 177 Divide, Colo 80814</i>
Source	<i>coverlet bought in 1994 in Niwot, Colo</i>
Pattern Name	<i>similar to Johann Ludwig Speck's #</i>
Weave Structure	<i>16 H 4thread 4block Reverse Twill (Damask)</i>

Sample Exchange Information

Warp	<i>8/2 unmercerized cotton natural</i>	Sett	<i>24 epi</i>
Weft	<i>2 ply dark blue wool</i>	Reed / Sley	<i>12 dent, 2/dent</i>
Comments	<i>wool was just slightly brighter blue than antique coverlet treadled as drawn in</i>		

Antique (or existing Coverlet) Information

Approximate Year	<i>1800s</i>	Fiber content	<i>cotton + wool (2 ply)</i>
Size of overall coverlet	<i>78 long 73 wide</i>	Yarn size (count)	
Condition of coverlet	<i>good</i>	Yarn plies	<i>3 ply cotton</i>
Weave structure	<i>16 H 4block Reverse Twill</i>	Color of yarns	<i>natural +</i>
Weaver (if known)	<i>J</i>	(Damask)	Name of pattern
			<i>Johann Ludwig Speck</i>
			<i># 2</i>



Nancy's Sample

