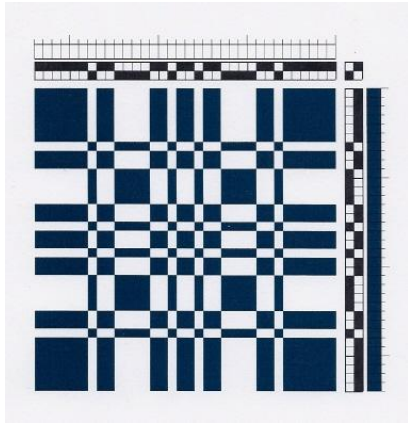


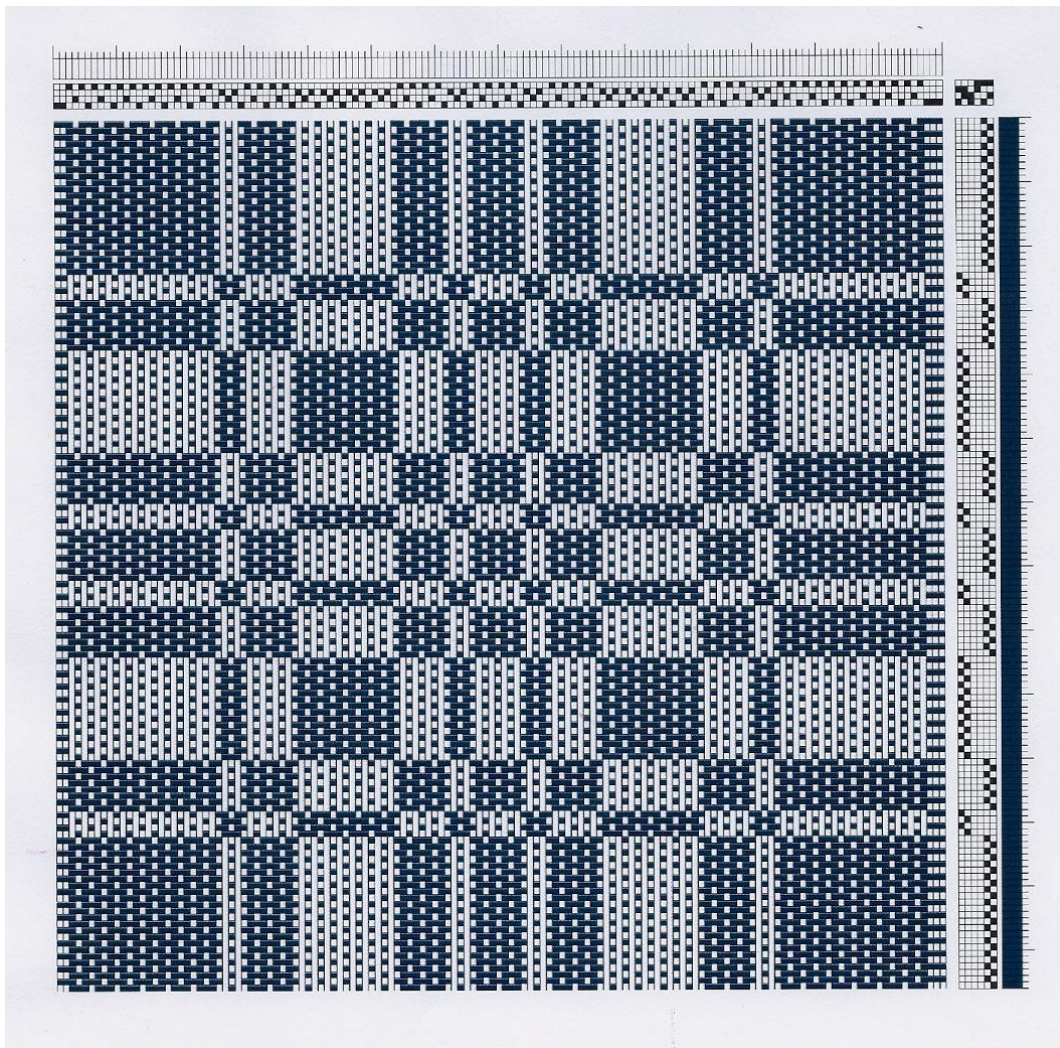
Designing with Pattern Blocks & Weave Structures



Sample Project: Missouri Check - Summer & Winter
Warp: 10/2 sett at 20 epi
Weft: tabby: 20/2 cotton; pattern: 2/8 JaggerSpun
or similar weight yarn

Comments: The draft is for one repeat of the
pattern at 140 threads. You can do two repeats by

repeating the pattern twice.



4	4	4	4	4	4											
													4	4	4	
	2			2				2					3	3	3	
			1			1				1	1	1		2		2
													1		1	

Setvage

	4	4				4	4	4		4	4	4			
				3	3										
		2			2			2				2			2
1			1			1			1				1		1

4														4	4
		3	3		3	3	3	3	3	3	3				
			2			2			2			2			2
	1			1			1			1				1	

			4	4		4	4					4		4	4
	3								3	3					
2				2			2				2				2
		1			1			1				1			1

										4	4	4		4		
3		3		3		3		3	3							3
	2				2				2					2		
			1			1			1				1			1

	4		4					4	4	4	4					
				3		3							3		3	
		2			2			2			2			2		
1				1			1			1			1			1

140 warp threads

		4		4		4		4		4		4		4		4
			2			2			2			2			2	
1	1				1			1			1			1		

W
Salvage

Tie-up for Rising Shed

Gay McGeary - gomcgeary@coverletweaver.com - coverletweaver.com

Rising Shed Tie-up

O	O		O		
			O	O	O
	O	O			O
O		O		O	
1	2	A	B	3	4

Block 1: Treadles 1, 2

Block 2: Treadles 3,4

Plain Weave: Treadle A & B

Method of Treadling

Alternate tabby on A or B with pattern treadles 1-4.

Pairs

Block 1: Treadle: ,1,2,2,1 for one unit

Block 2: Treadle: 3,4,4,3 for one unit

Singles or Nonpairs

Block 1: Treadle: ,1,2,1,2 for one unit

Block 2: Treadle: 3,4,3,4 for one unit

Treadling Overshot or Dukagang

Block 1: Treadle: ,2,2,2,2 for one unit

Block 2: Treadle: 3,3,3,3 for one unit