

Gebrochene at MAFA 2013 & More

Gay McGeary

coverletweaver.com

MAFA 2013

June 21-23, 2013

University of Scranton

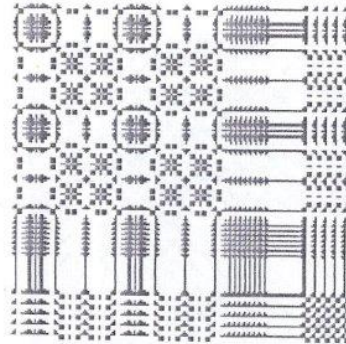
Scranton, PA

Woven at Home

Marjie Thompson

- Explore textiles woven on treadle looms before and after the Industrial Revolution in New England & the Mid-Atlantic States.
- The Industrial Revolution - the transition to new manufacturing processes in the period from about 1760 to sometime between 1820 and 1840.

My Assignment – Gebrochene Tablecloth Pattern



WOVEN AT HOME

Weave Structure: Gebrochene

Source: Tablecloth at The American Textile History Museum marked "Mary Wissler 1836" Acc. # 80.15. Also in many draft books.

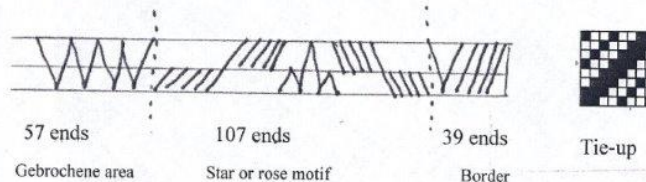
Warp: 10/2 – white or natural

Weft: Same or a color may be used

Set: 30 epi

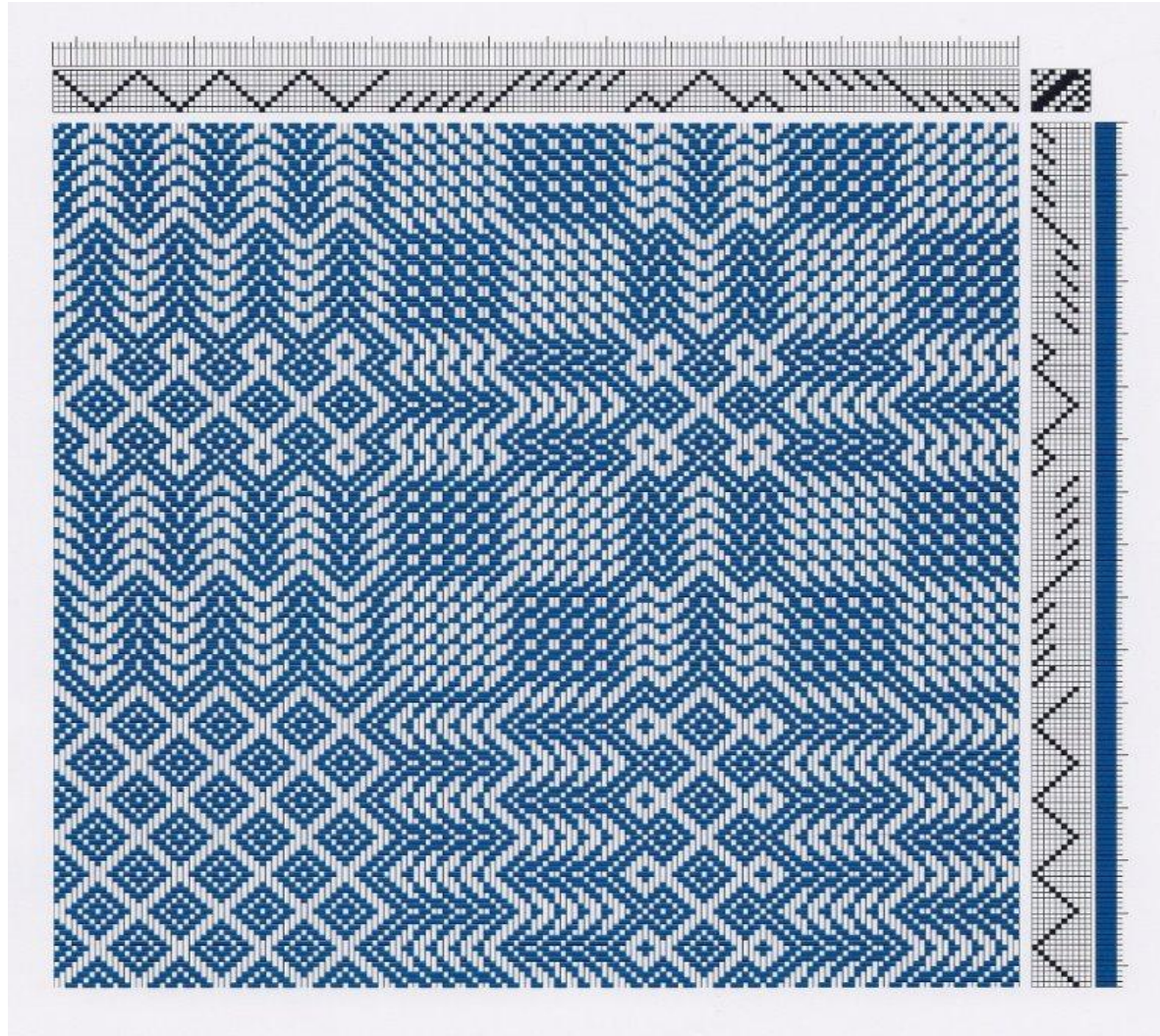
Sley: To get set

Comments: This weave has an elaborate threading and treadling and a simple tie-up. It is surprisingly simple easy to thread from a short (profile) draft and also easy to weave from the same draft. Treadling is tromp as writ.



Runner is 513 ends; Border-rose-gebrochene-rose-gebrochene-rose-border

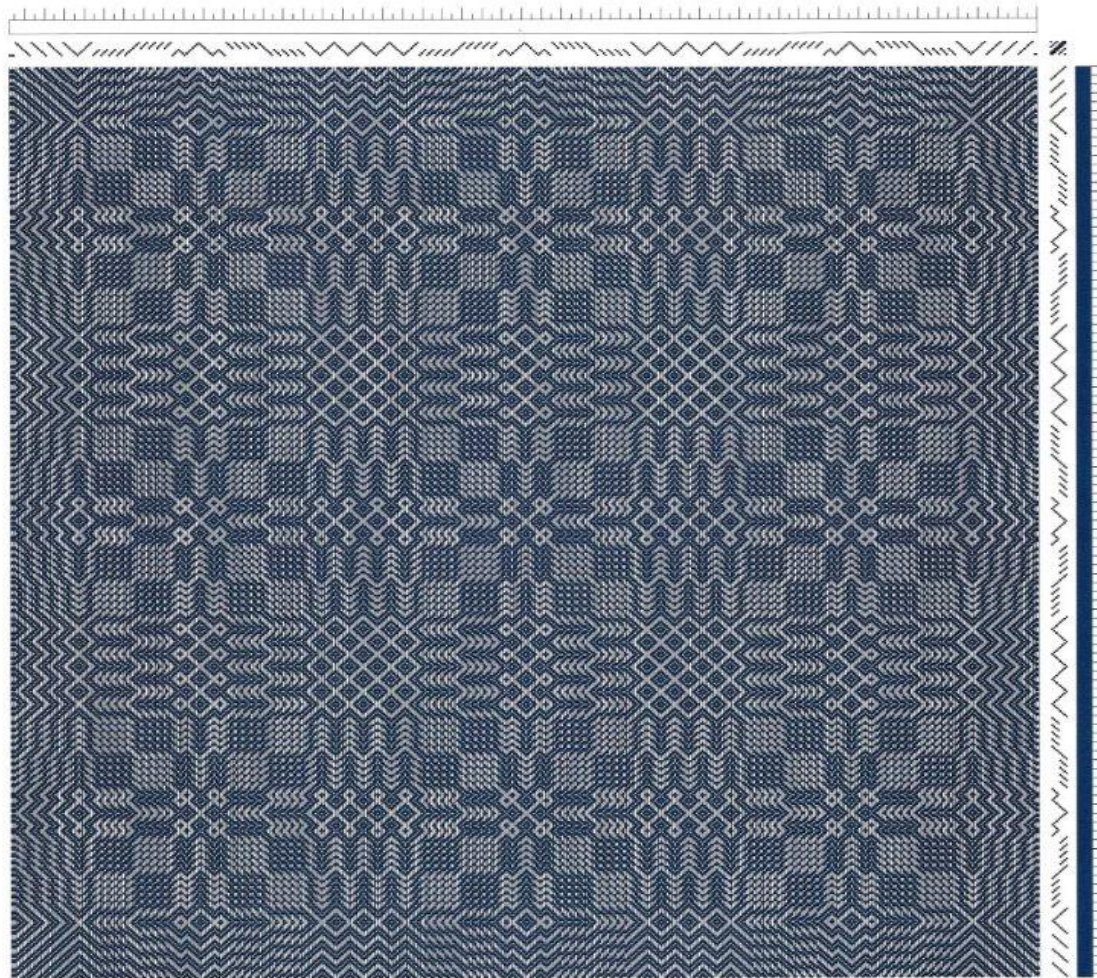
Drawdown of Wissler Draft



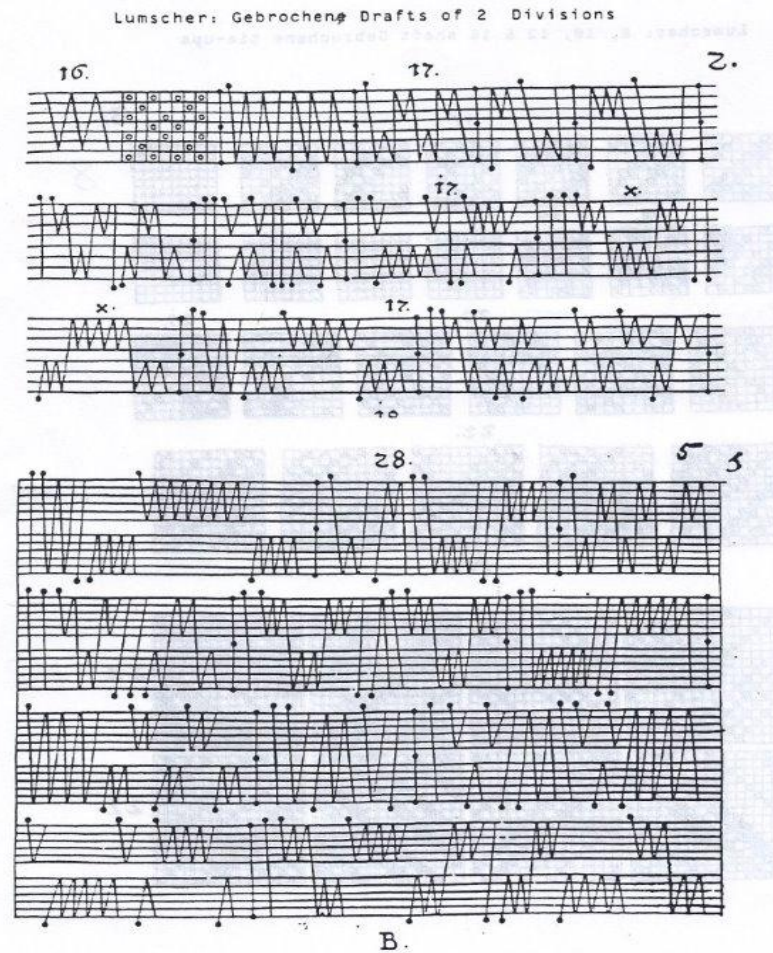
Woven Sample



Drawdown of Sample

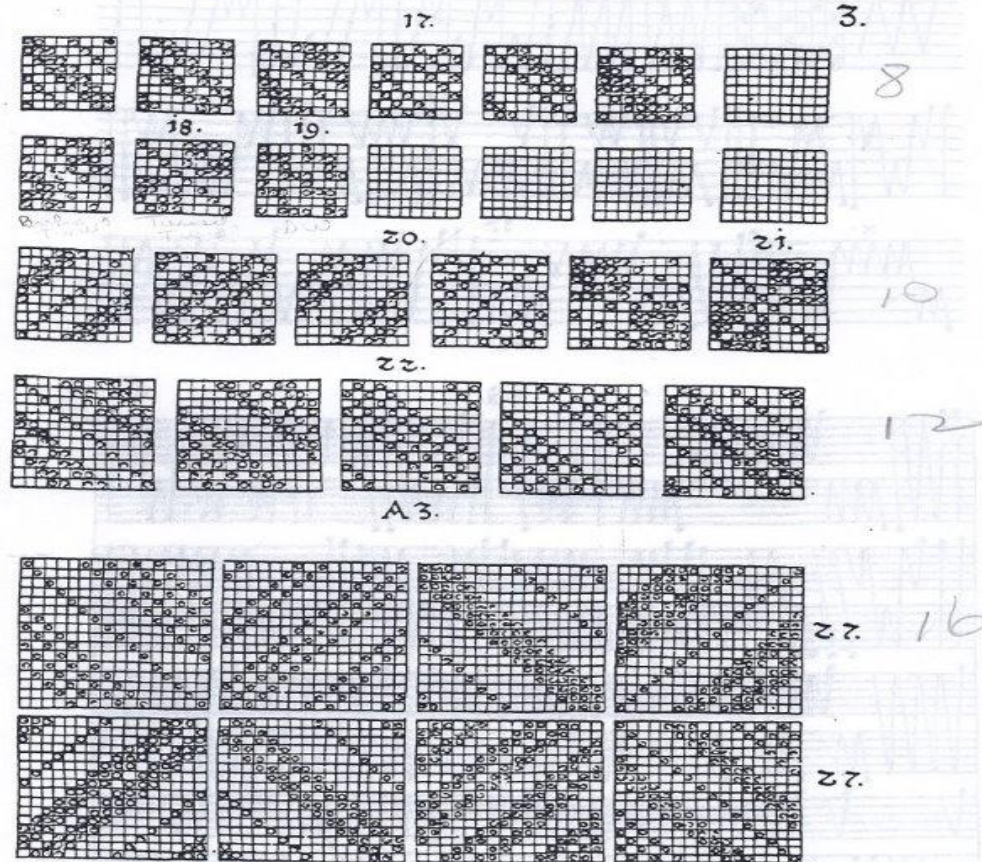


Lumscher's 17th Century German Linen Gebrochene Drafts – 2 Divisions



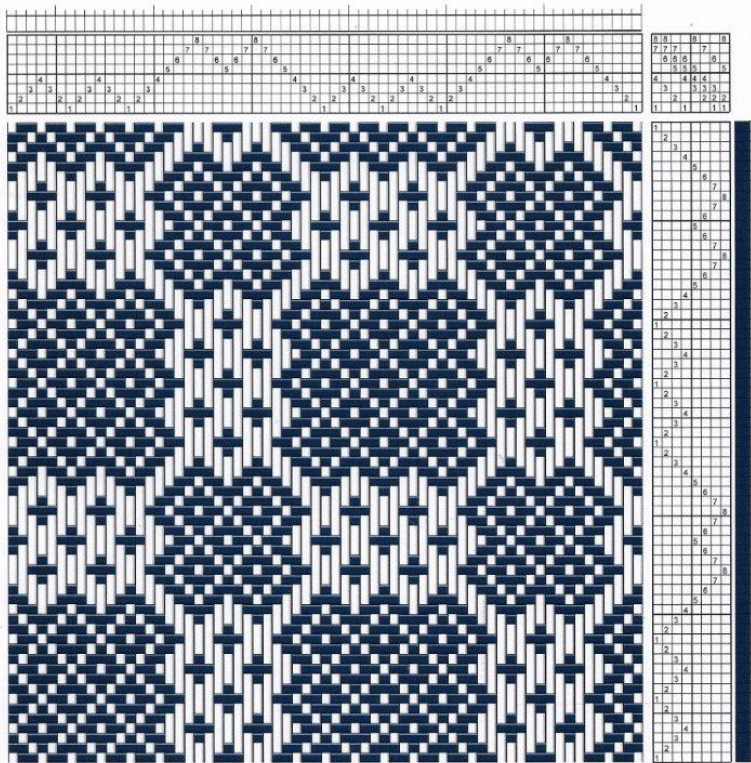
Lumscher's Tie-Ups

Lumscher: 8, 10, 12 & 16 shaft Gebrochene tie-ups



Two Division Gebrochene

8 Shafts



10 Shafts



Two Division Gebrochene

12 Shafts

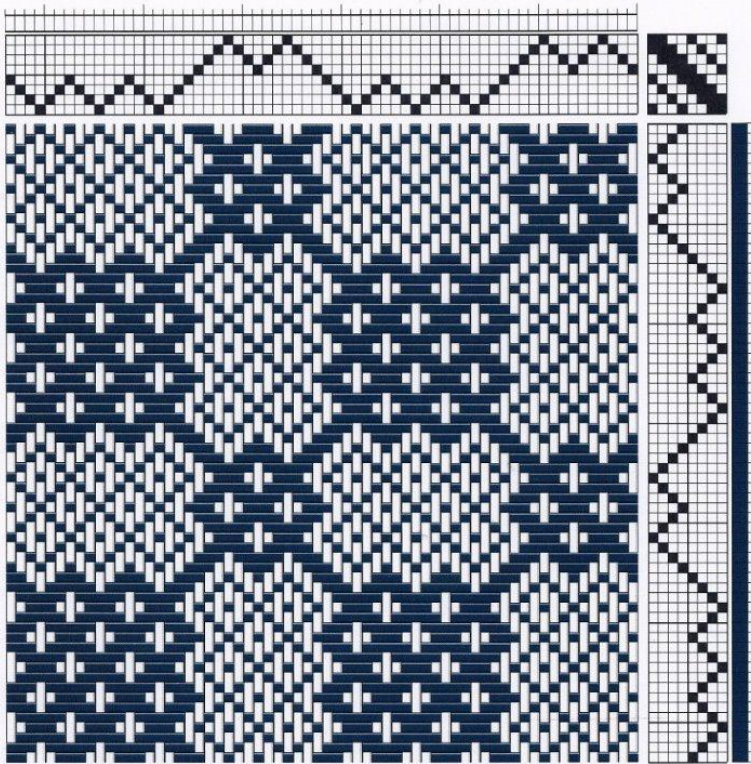


16 Shafts



Lumscher – Two Divisions with reversed treadling & connecting motifs

8 Shafts



10 Shafts



Lumscher cont.

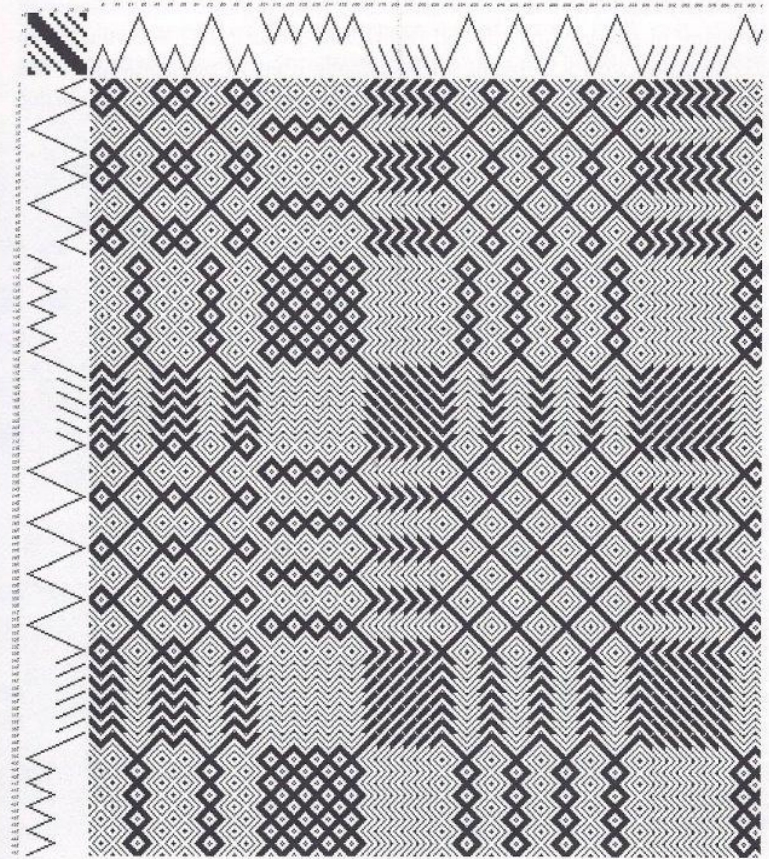
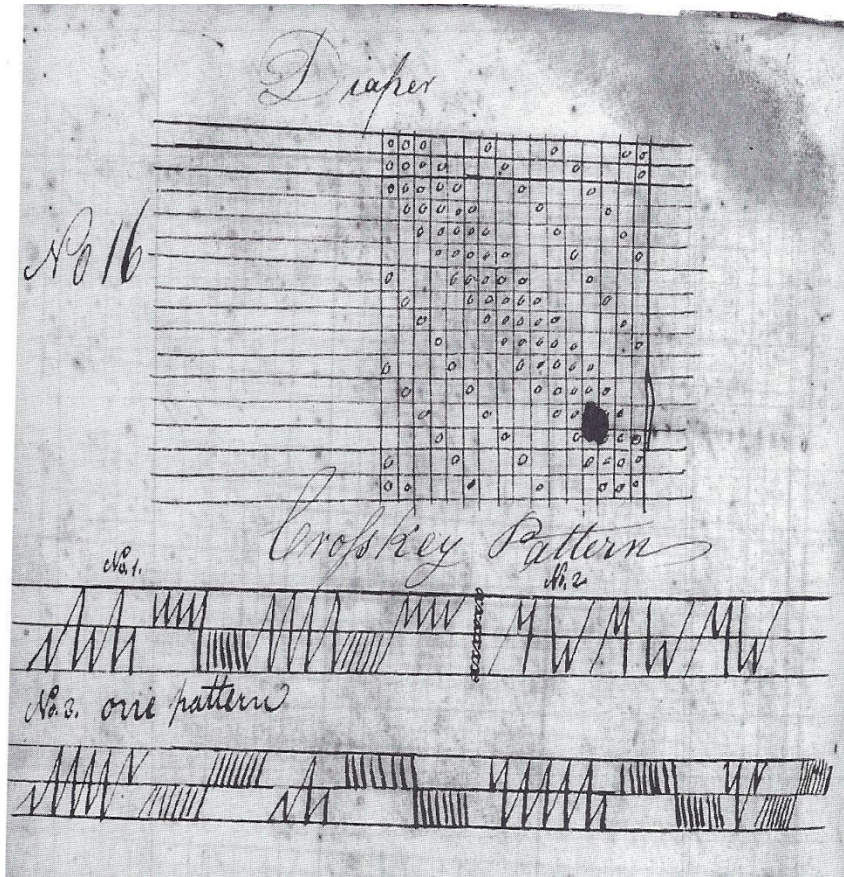
12 Shafts



16 Shafts

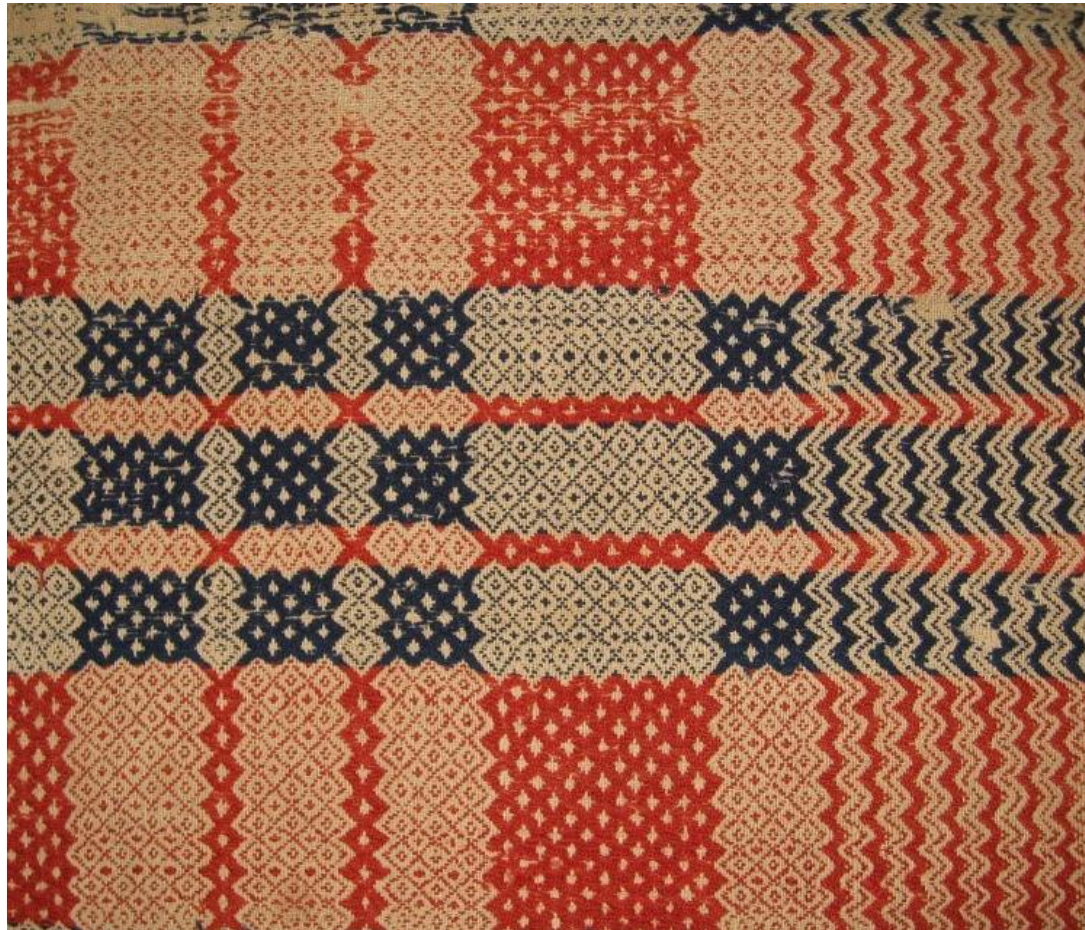


Christian Frey “Crofs Key” Pattern

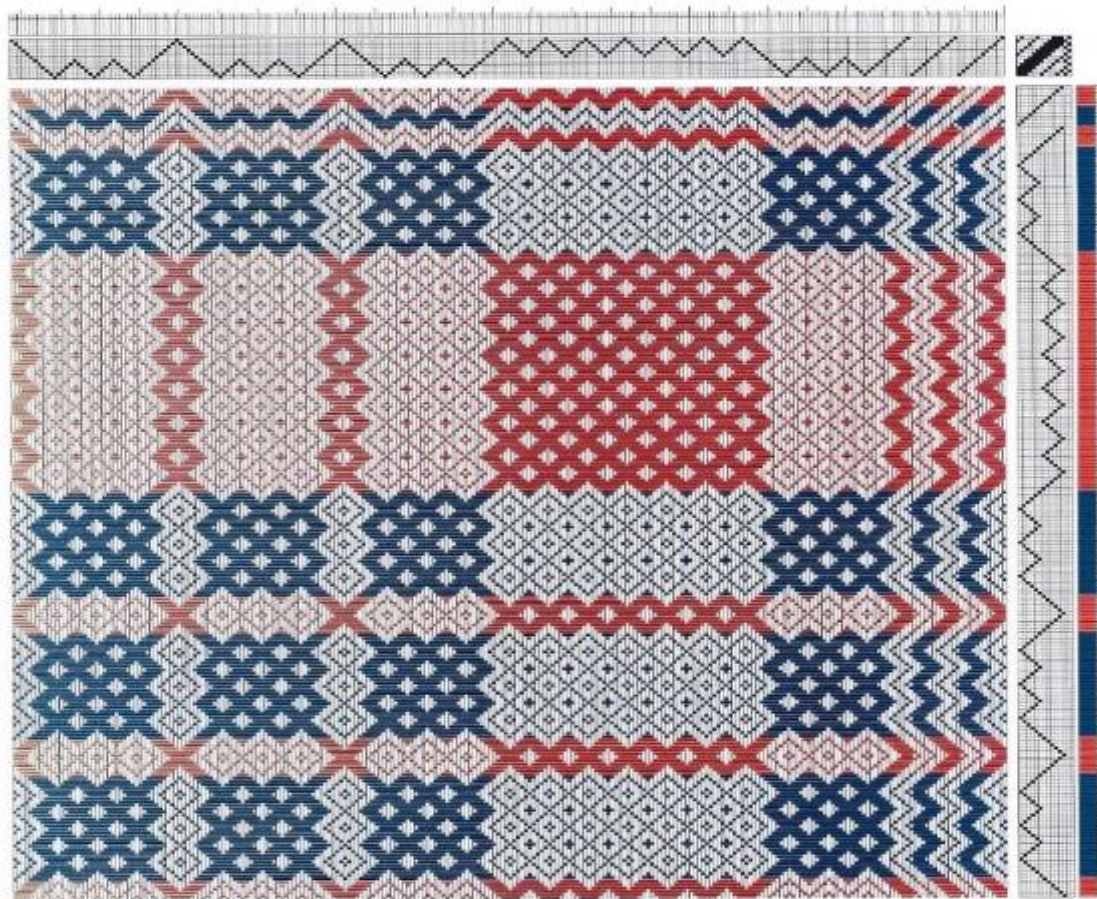


Draft & Drawdown from Tandy & Charles Hersh's book entitled Rural Pennsylvania German Weaving 1833-1857 and the Christian Frey and Henry Small, Jr. Pattern Books

Two Division Coverlet Fragment



Drawdown of Fragment – 12 Shafts



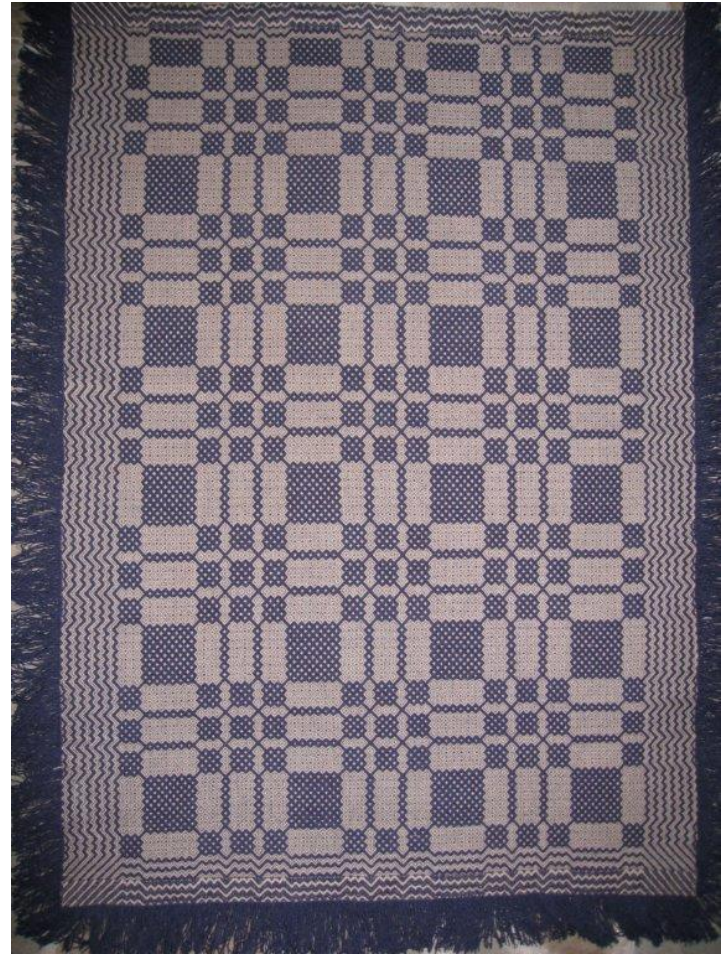
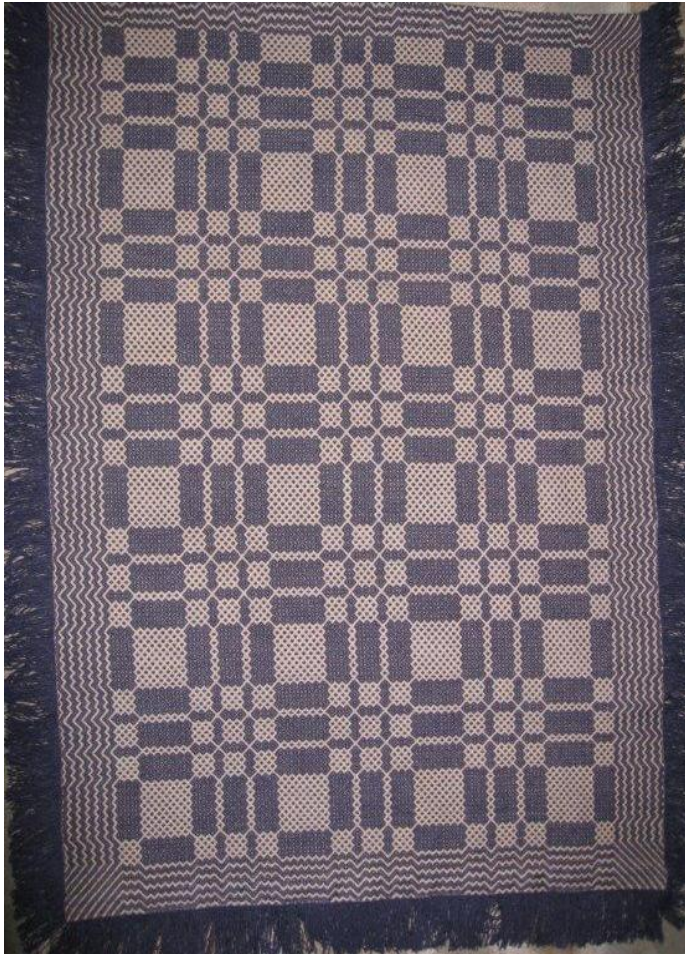
Runners in Traditional Colors



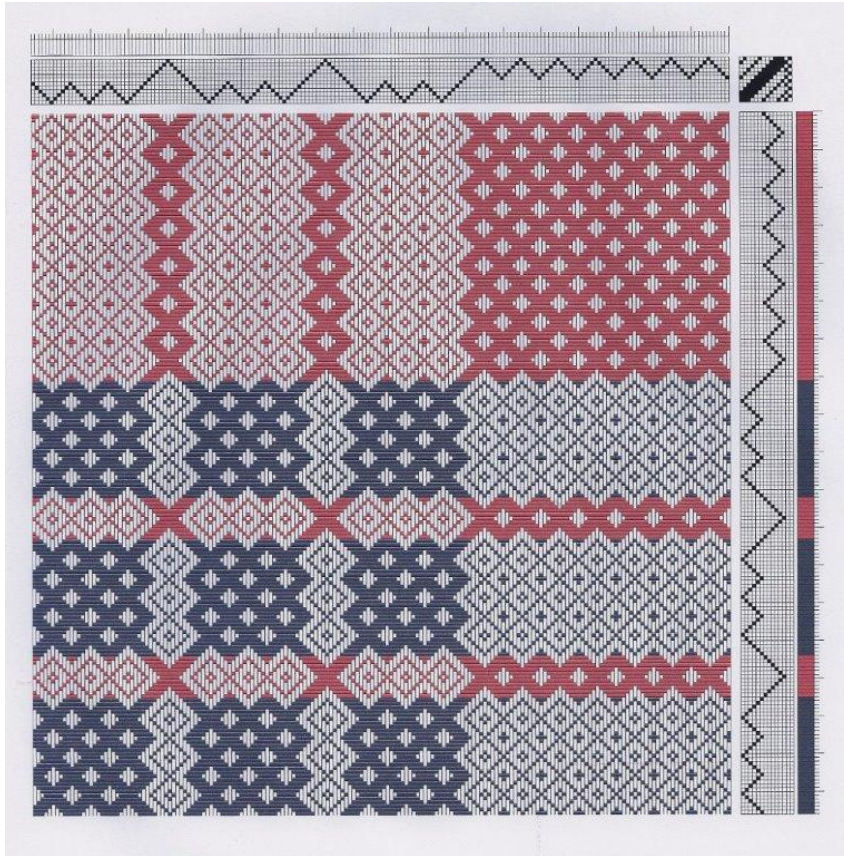
McGeary Woven Single Width Coverlet



Two Sides of Coverlet



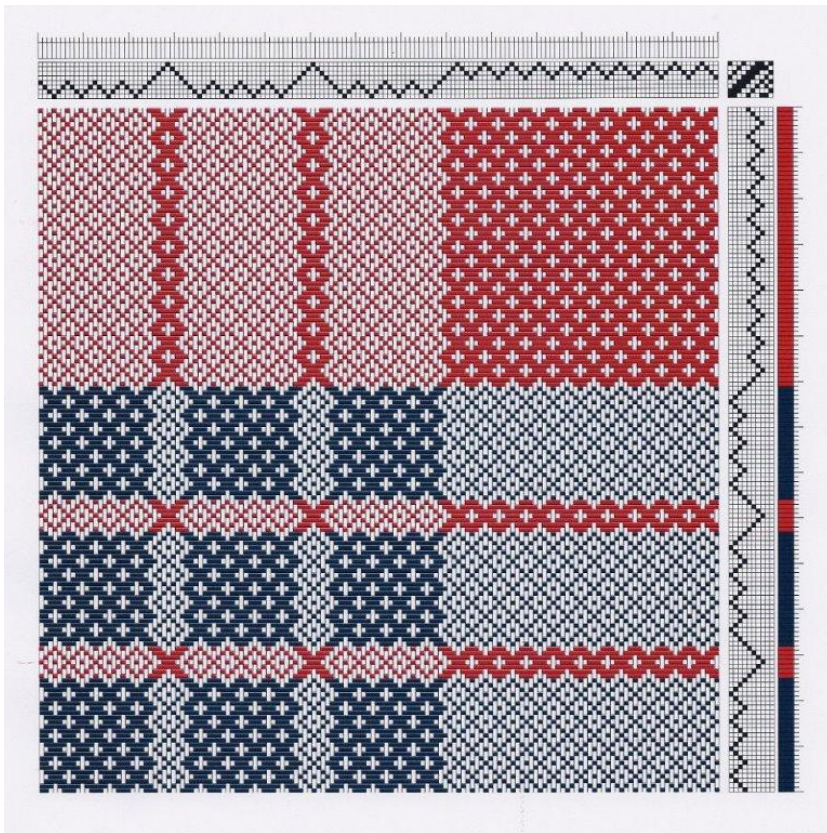
My 8 Shaft Coverlet Pattern



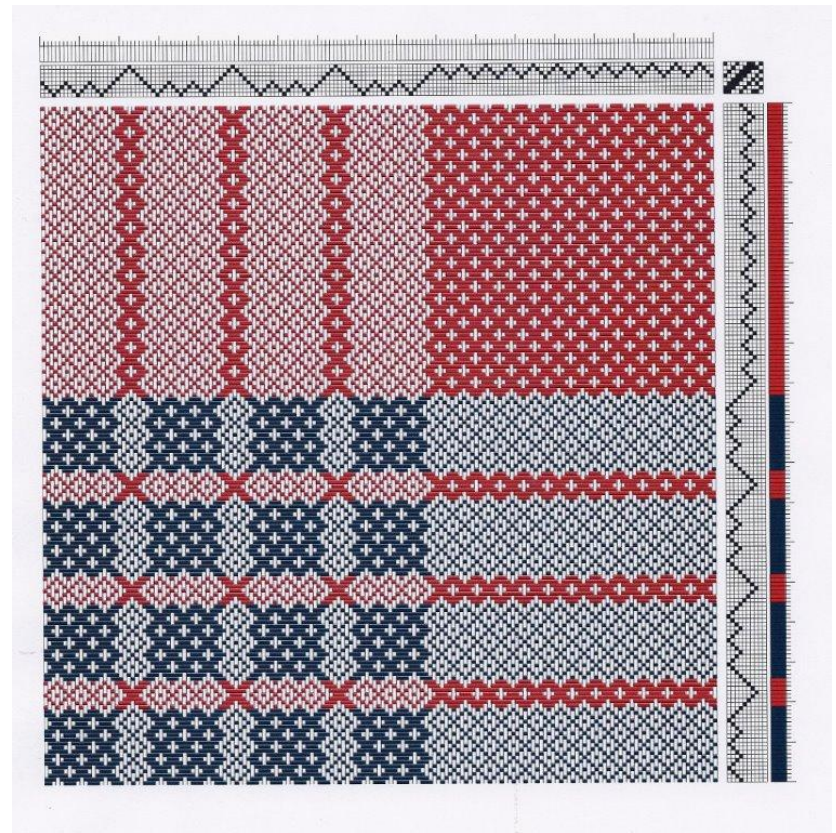
- 8 shaft draft is smaller with 114 threads
- 12 shaft has 186 threads
- I can enlarge the pattern.

Enlarged 8 Shaft

150 threads



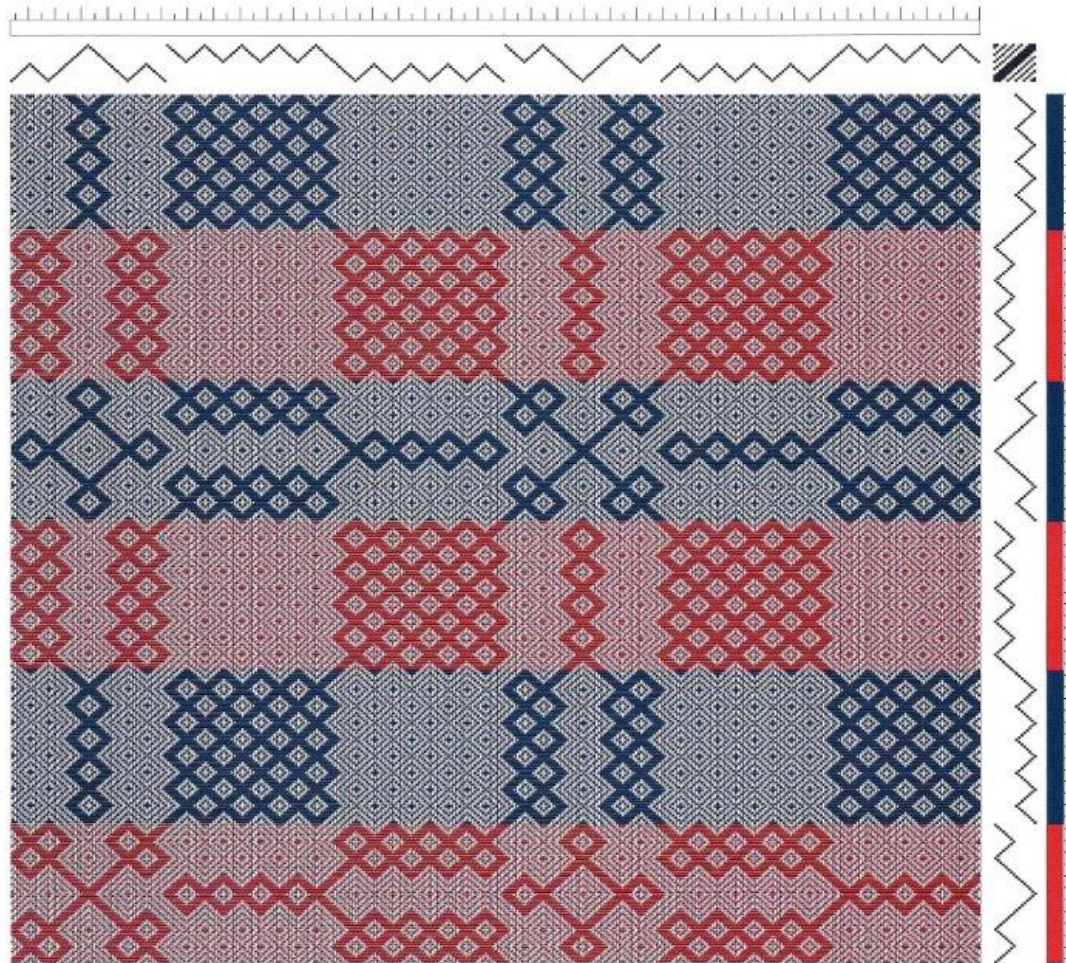
170 threads



Two Divisions - Singles



Two Divisions – 16 Shafts



Three Divisions

Owned by Kitty Bell & Ron Walter

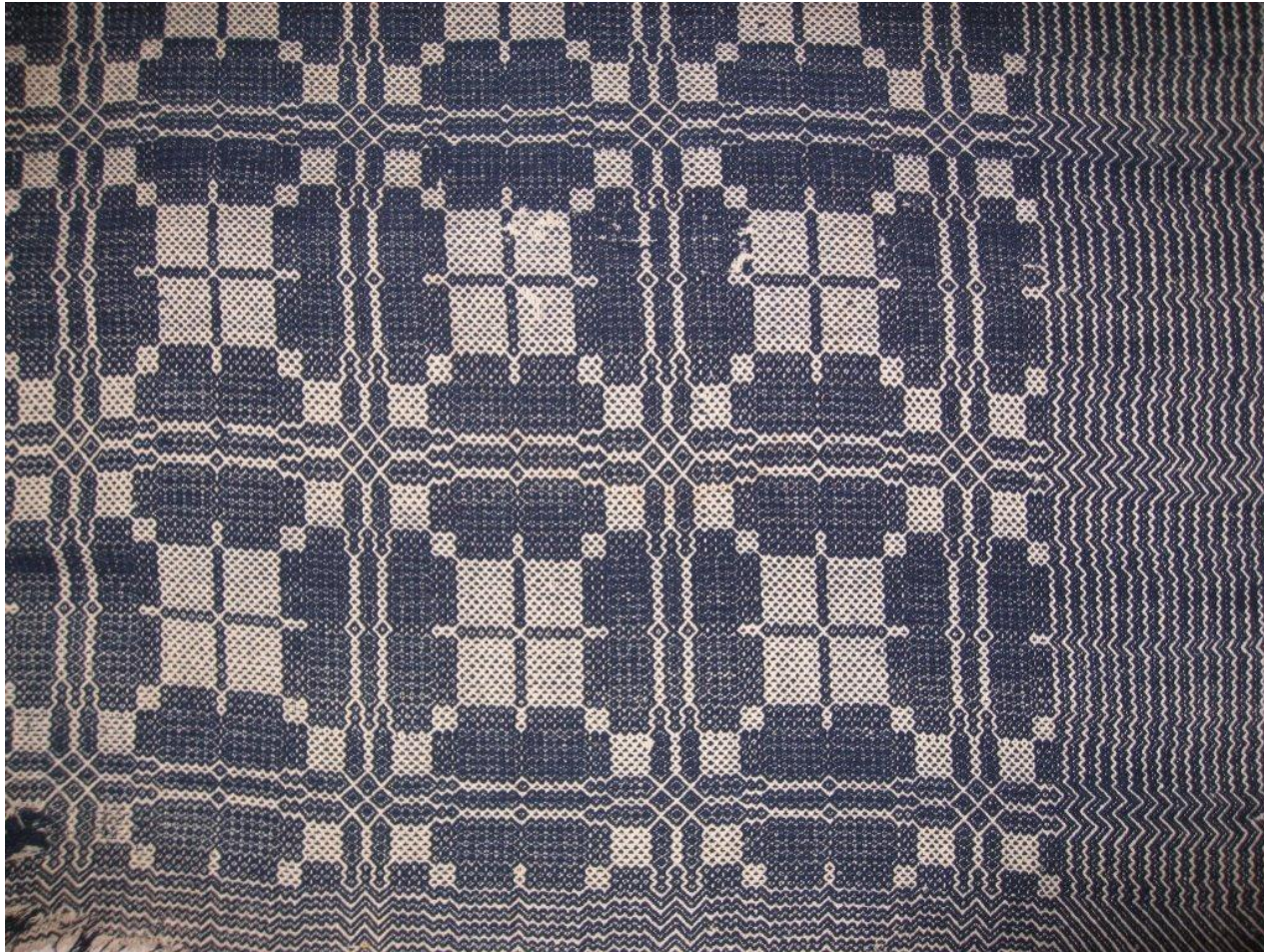


18 Shafts – Singles



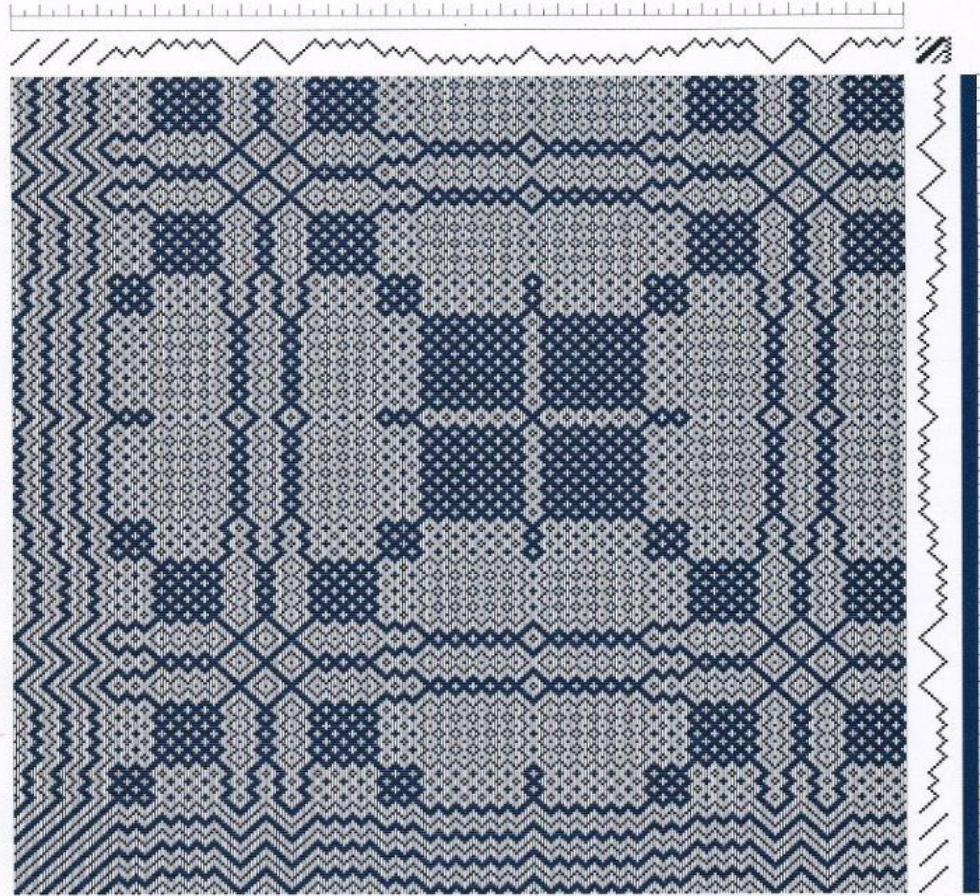
Three Division – Overlapping

Owned by Kitty Bell & Ron Walter



Overlapping – 4 shafts per division on 10 shafts

Half Double – Plain Weave Foundation



Three Division – Overlapping

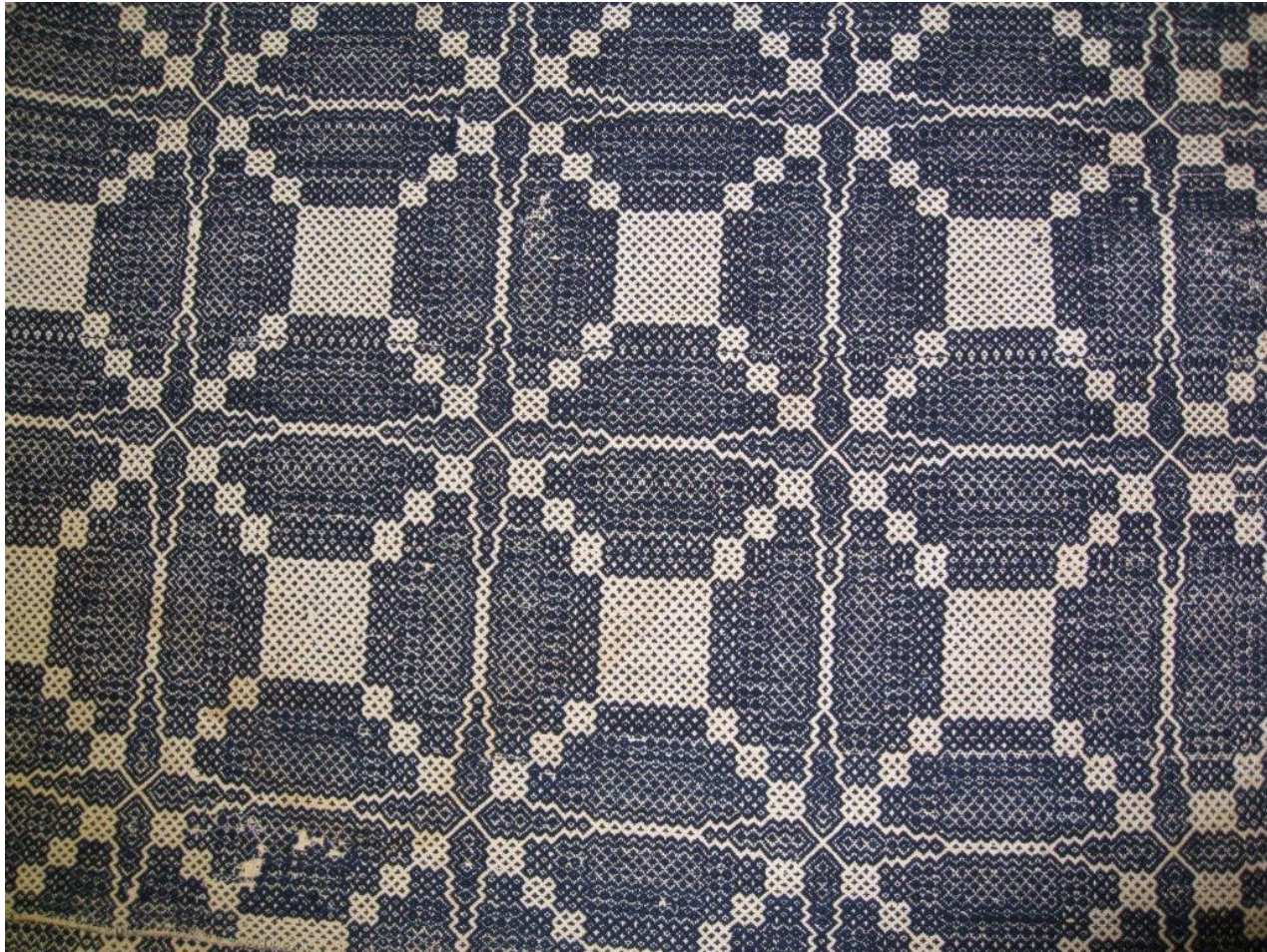
Owned by Kitty Bell & Ron Walter



Overlapping – 4 shafts per division on 10 shafts



Four Division Gebrochene – Overlapping Owned by Tom Knisley



Overlapping – 4 shafts per division on 13 shafts



Research for Another Day

Beth Wilson's Coverlets



Three Divisions - ? Shafts

