

# Cat Track & Dog Paw & a Few Eagles

Coverlet College 2015

NMAC

Gay McGeary

# Coverlet Pattern Names

- **Places** - Pittsburgh Cord, Virginia Pattern
- **Flowers** - Whig Rose, Pine Bloom, Dogwood Blossom
- **Events** - Lee's Surrender
- **Objects** - Snowball, Double Chariot Wheels, Church Windows, Lover's Knot
- **People** - McCullough's Pattern

# Animal Names

- Cat Track & Snail Trail
- Rattlesnakes Skin, Trail
- Dog Paw, Foot
- Eagle
- Turtle Shell



Repetition of main  
pattern

Fringe

Border pattern



# Geometric Coverlets

Coverlets designed with geometric patterns which are characterized by **straight lines, triangles, circles or similar regular forms**

# Geometric Coverlets

- Pattern
- Weave Structure



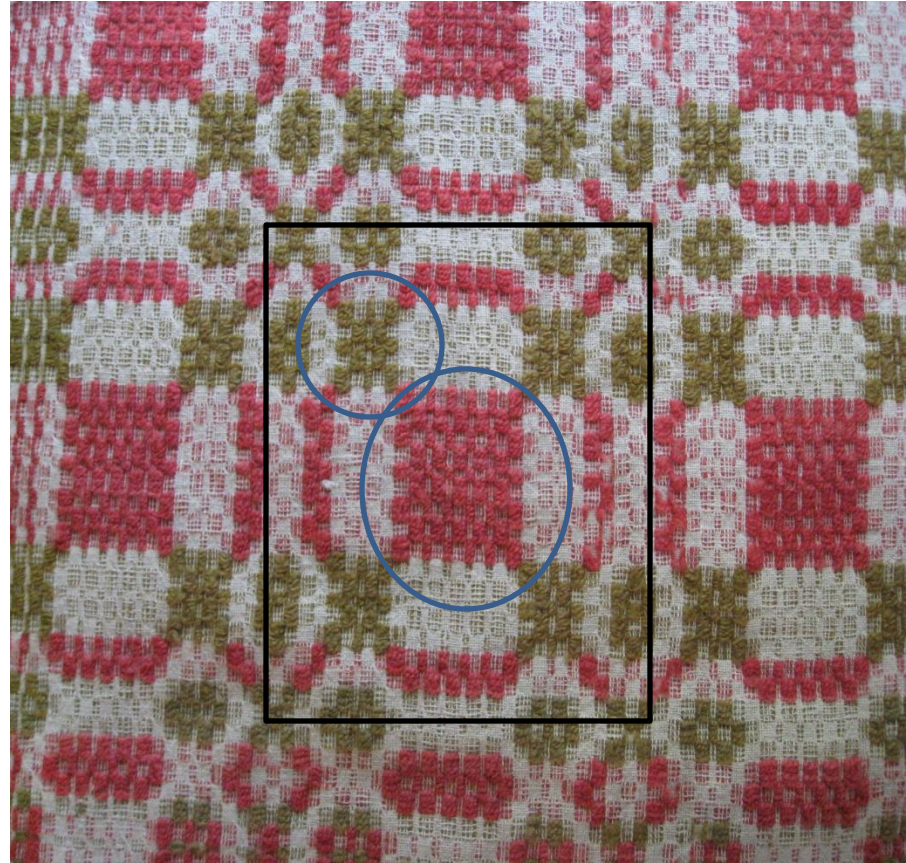
# Geometric Coverlets

Motifs in the  
Pattern:

**Star**

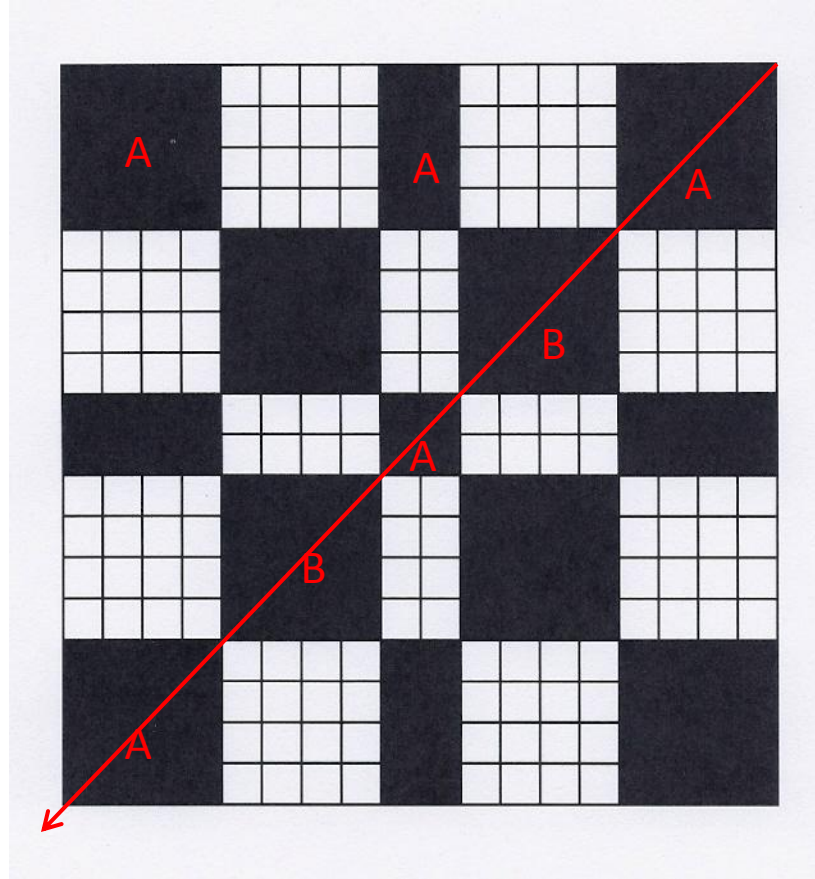
**Rose**

**Cross**



# Pattern Blocks

## Two Block Star Motif

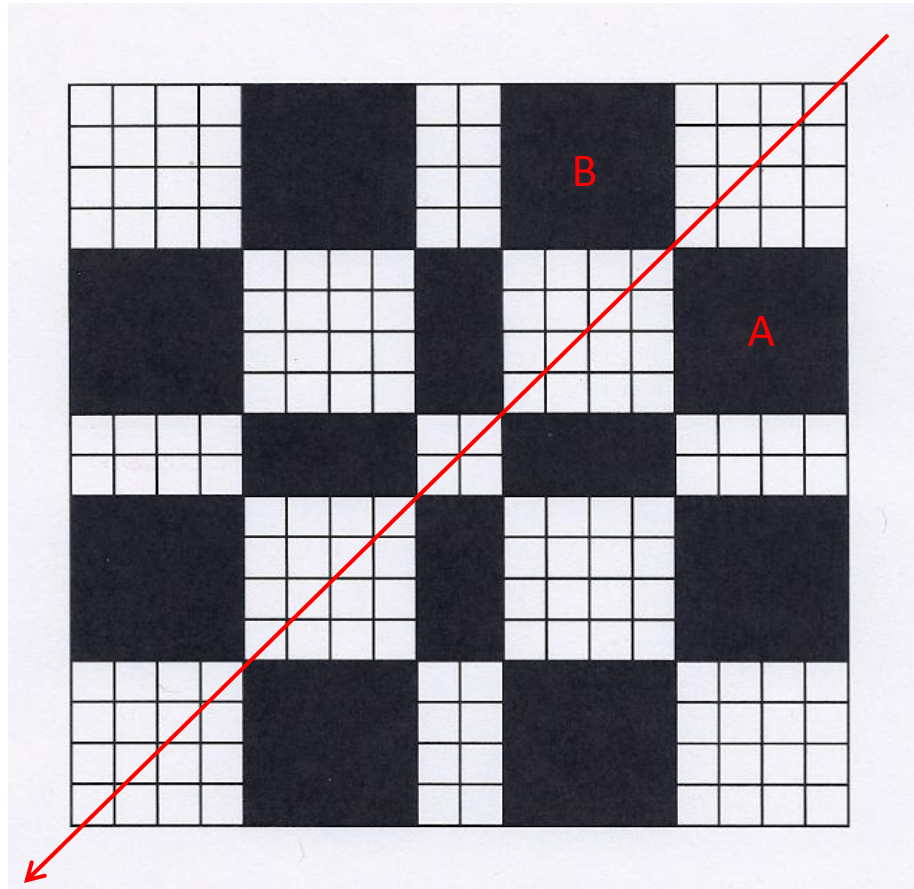


Woven As  
Drawn In

Tromp  
As Rit

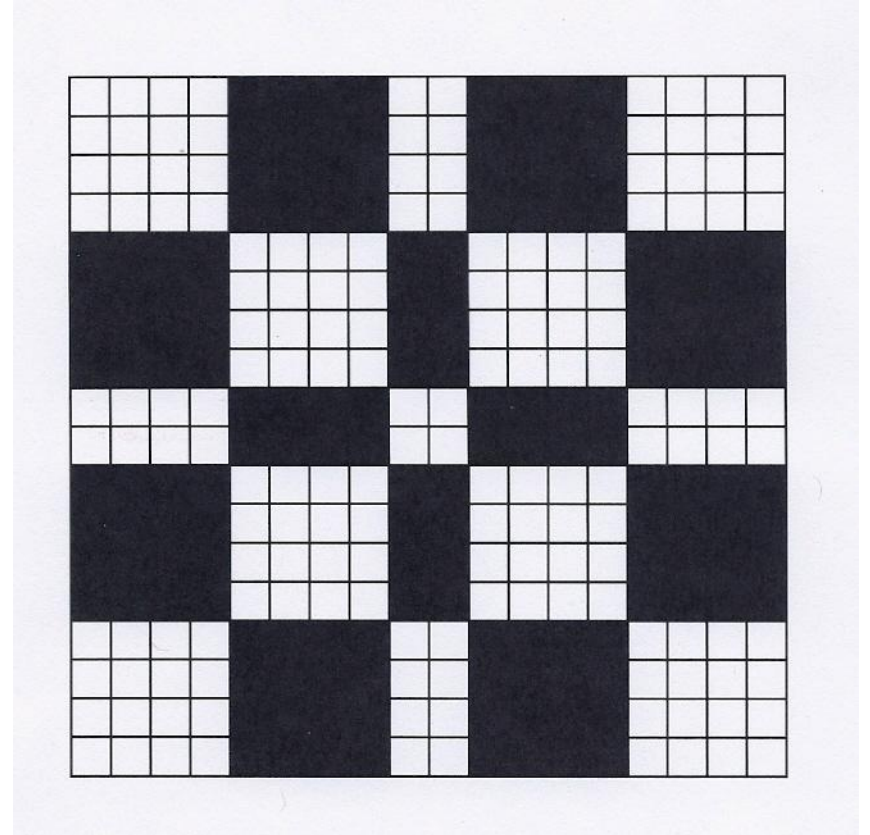
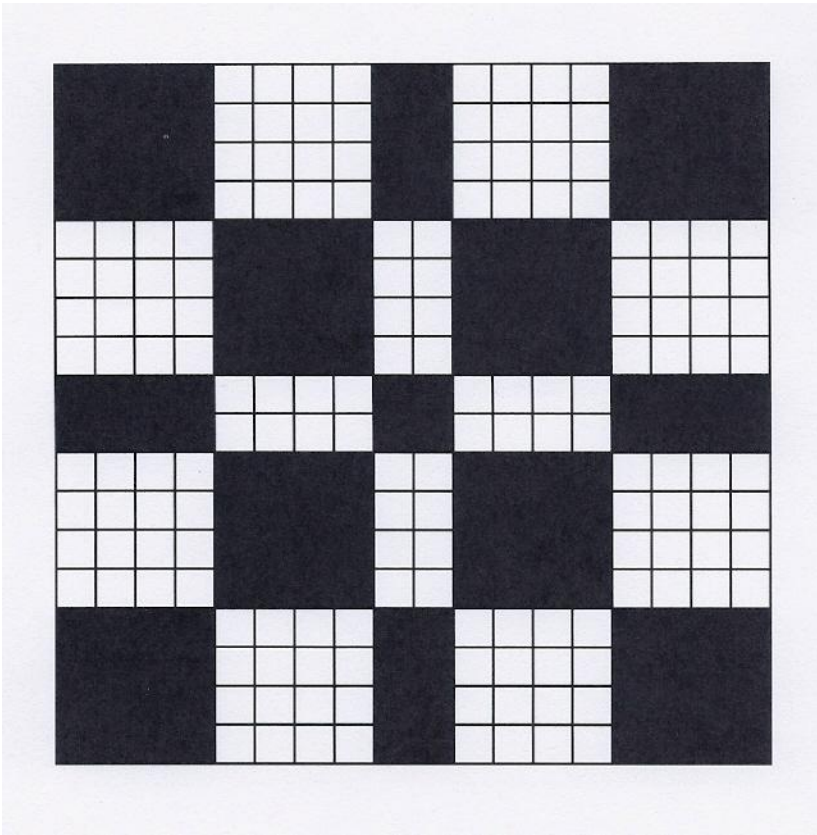


# Two Block - Rose Fashion

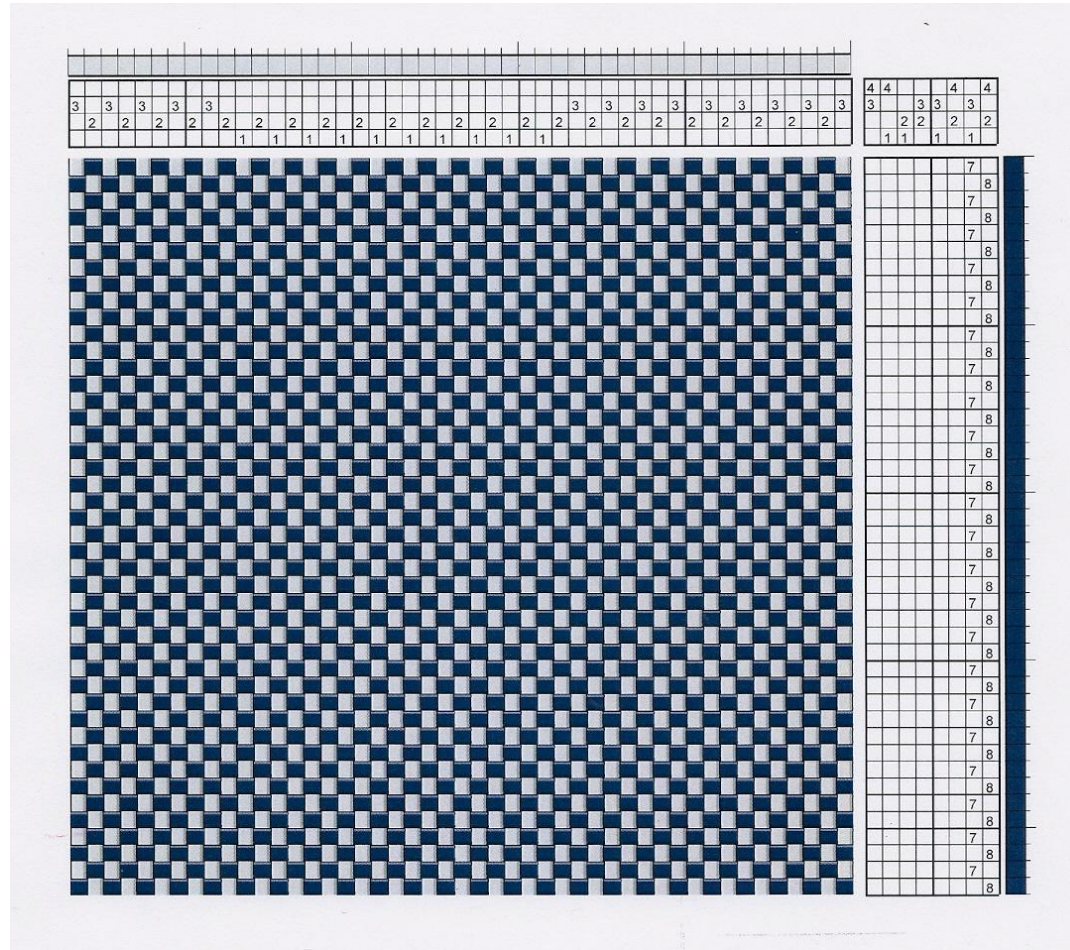




# Basic Two Block Motif



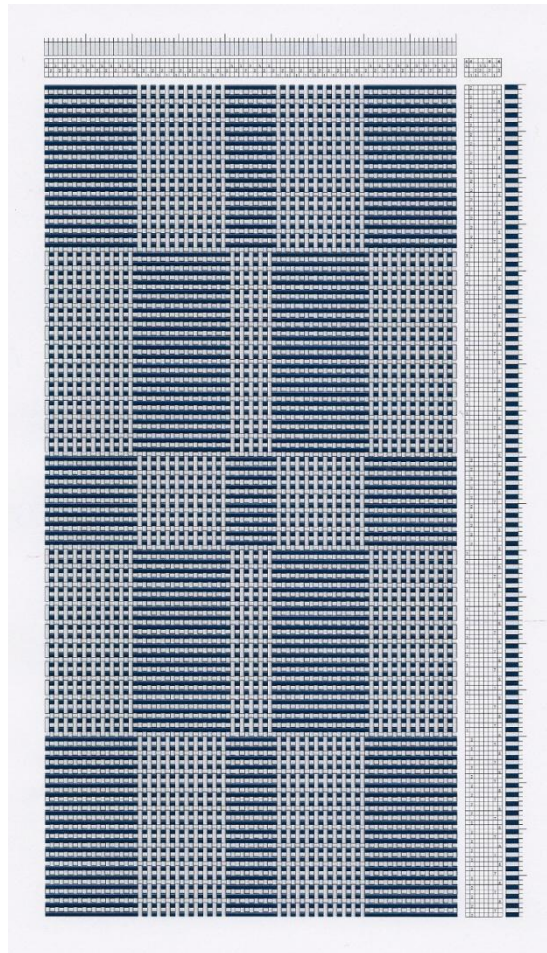
# Overshot/Float Work Plain Weave Foundation



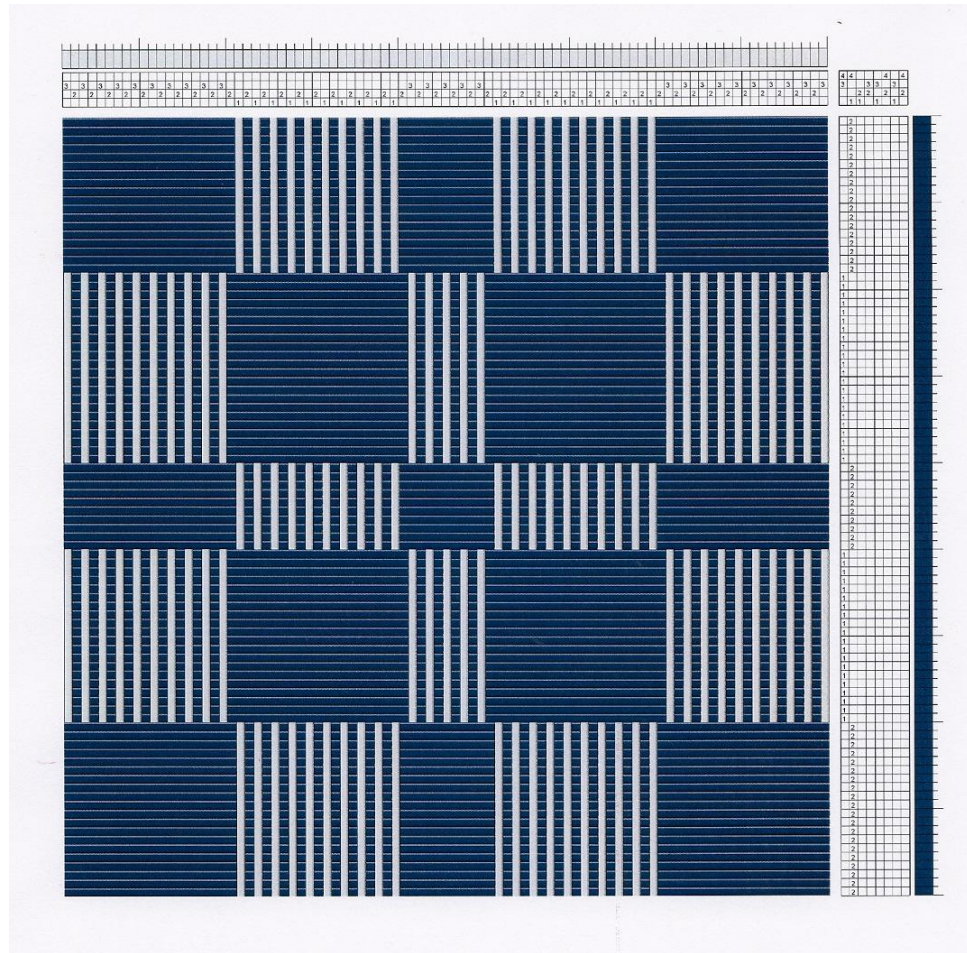
[illegible]



# Add Pattern Floats

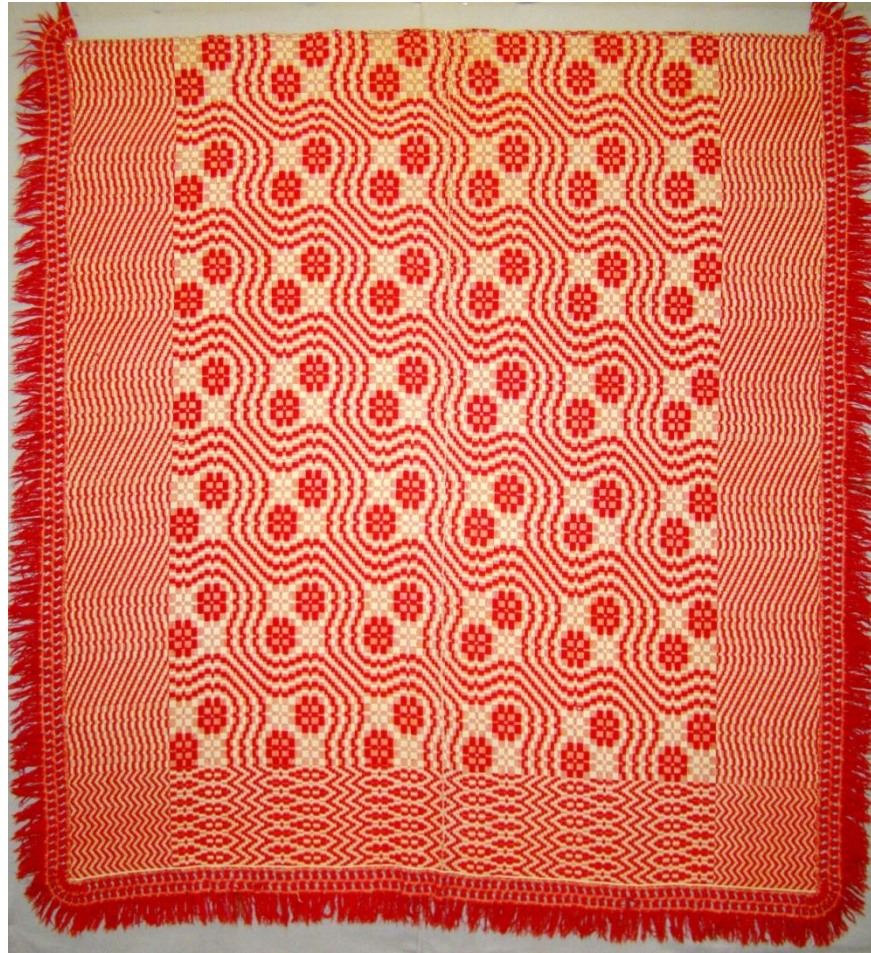


# Star Motif with Pattern Floats





# Cat Track & Snail Trail



# Cat Track & Snail Trail

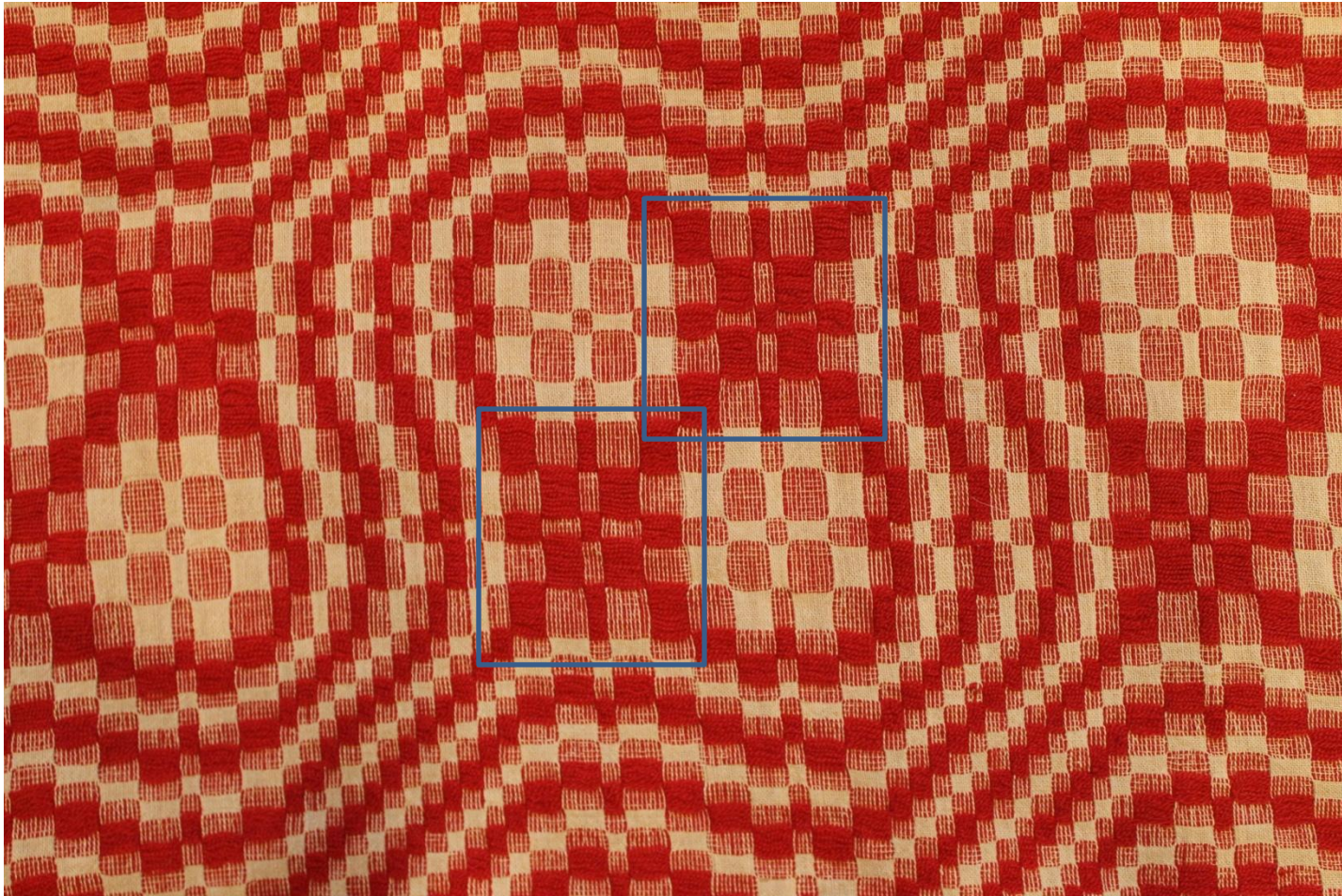
Cats Paw	Blooming Vine	Old Girl
Dog Tracks	Flowering Vine	Old Roads
Rattlesnakes	Running Vine	Snowballs
Rattlesnakes Skin	Trailing Vine	Soldier Return
Rattlesnakes Trail	Winding Vine	Winding Road
Snakes Skin	Vine Around the Stump	
Snakes Trail	Ocean Wave	

Names per Lou Tate in her book *Kentucky Coverlets*



# Cat Track & Snail Trail Coverlet

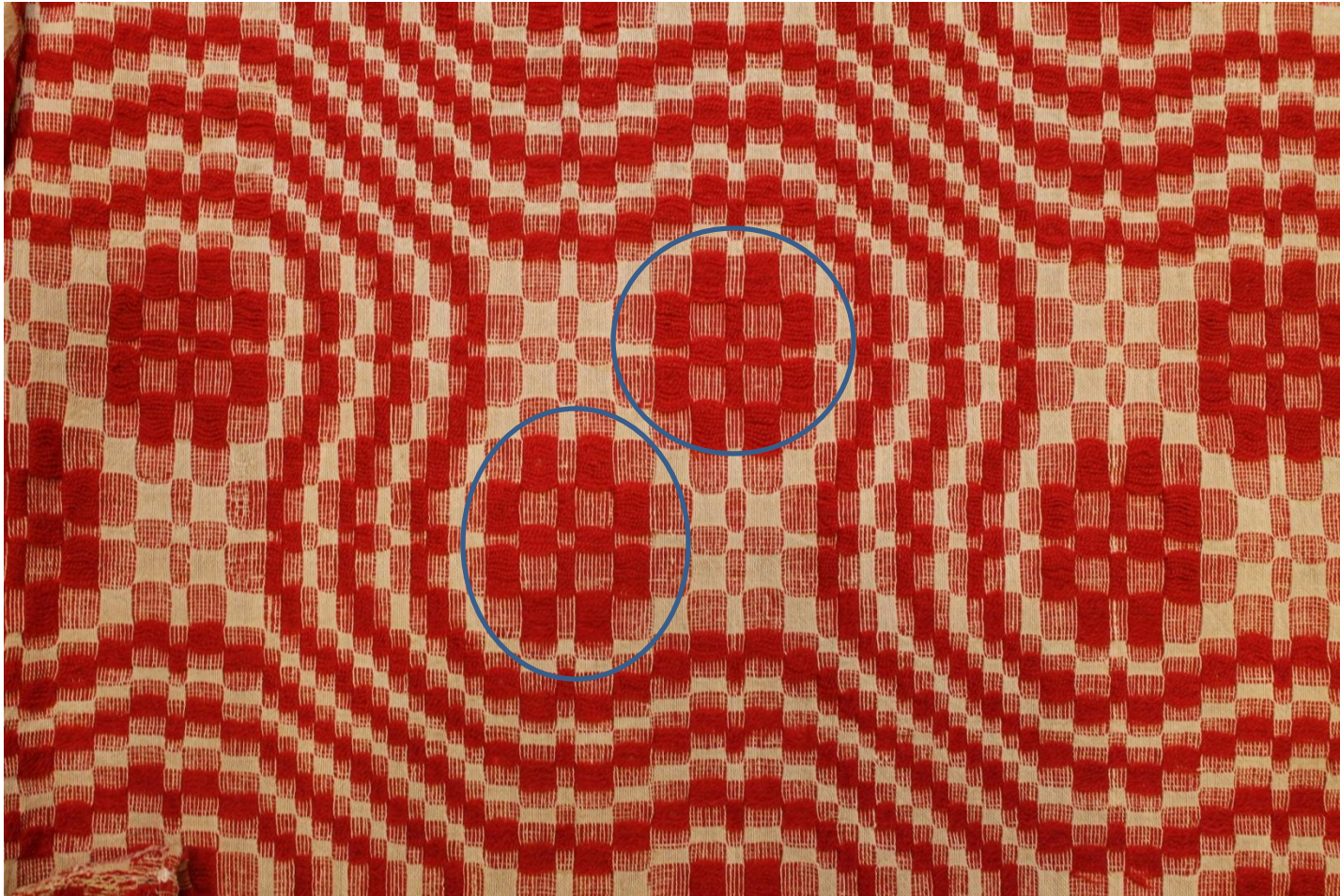
Woven As Drawn In - Star Motifs





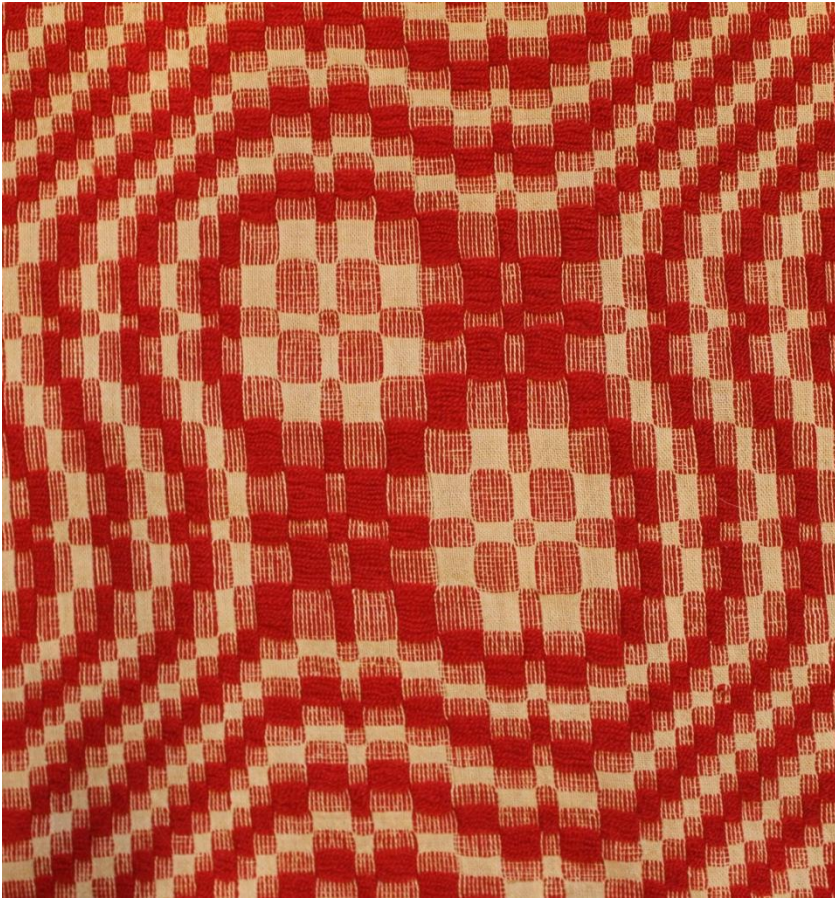
# Cat Track & Snail Trail

Rose Fashion

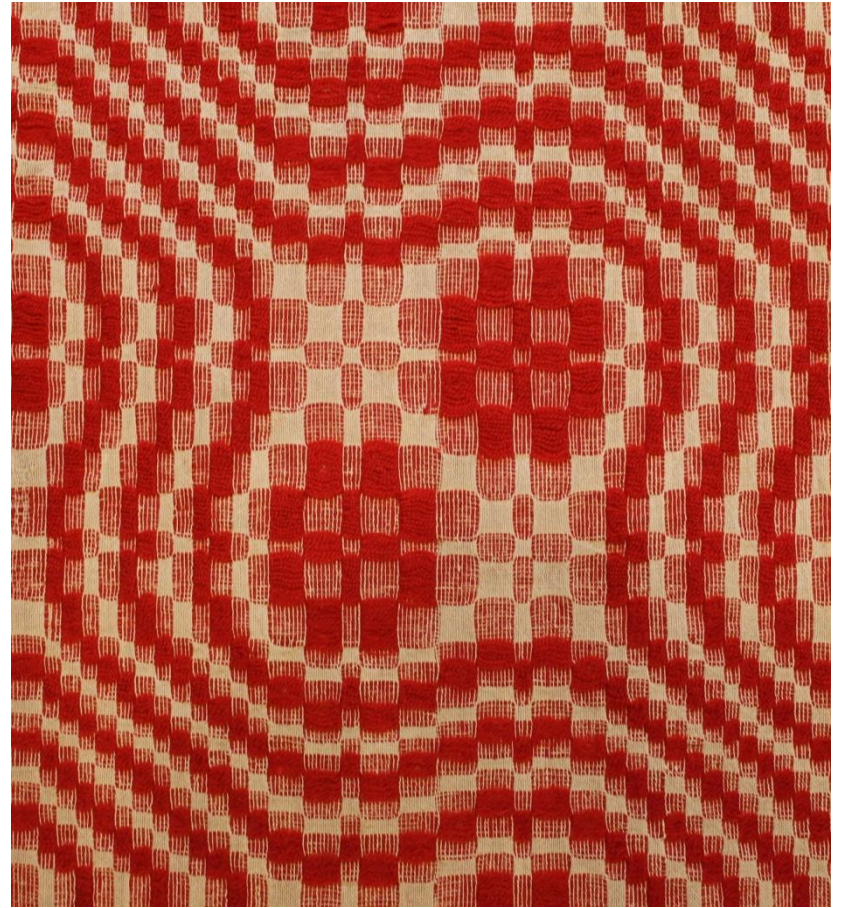




Star - Woven As Drawn In



Rose - Rose Fashion

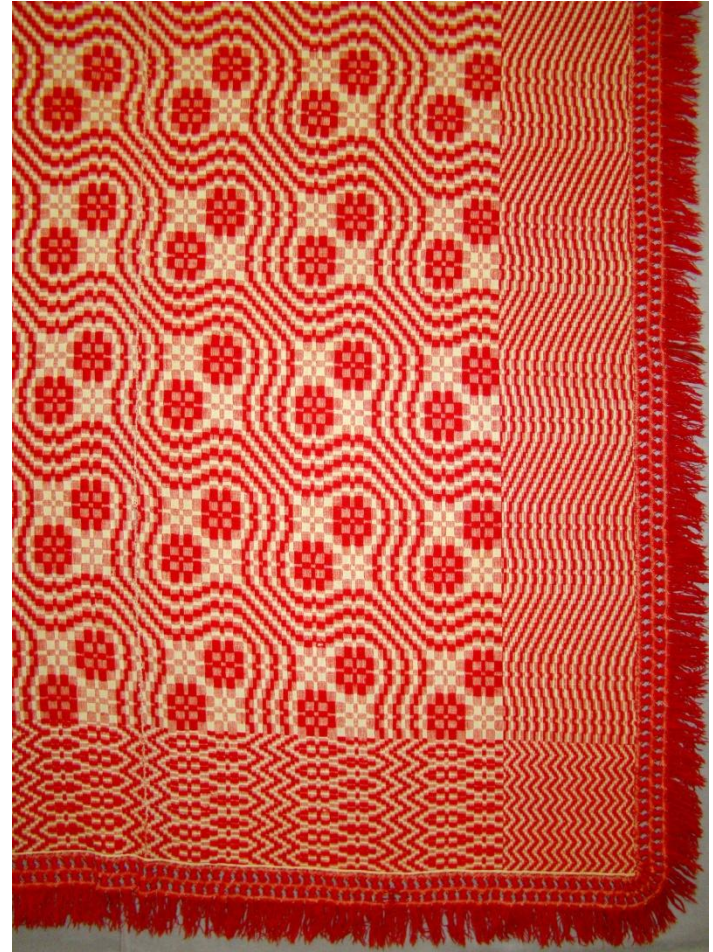




# Treading Table - Cat Track

Book	Author	Year	Treading
<i>A Book of Hand-woven Coverlets</i>	Eliza Calvert Hall	1922	As Drawn In
<i>Kentucky Coverlets</i>	Lout Tate	1938	Both ways
<i>Heirlooms from Old Looms</i>	CCGA	1940	Both ways
<i>A Handweaver's Pattern Book</i>	Marguerite Porter Davison	1944, 1971	Rose Fashion
<i>Of Coverlets</i>	Sady Tune Wilson & Doris Finch Kennedy	1983	As Drawn In
<i>The Weaving Roses</i>	Isadora Safner	1985	As Drawn In
<i>American Woven Coverlets</i>	Carol Strickler	1987	Rose Fashion
<i>Textile Art from Southern Appalachia</i>	Kathleen Curtis Wilson	2001	As Drawn In
<i>The Coverlet Book</i>	Helene Bress	2003	Both ways
<i>Francis Goodrich's Brown Book of Weaving Drafts</i>	Barbara Miller	2013	Woven As Drawn In

# Two Cat Track Coverlets



# Fringe Techniques

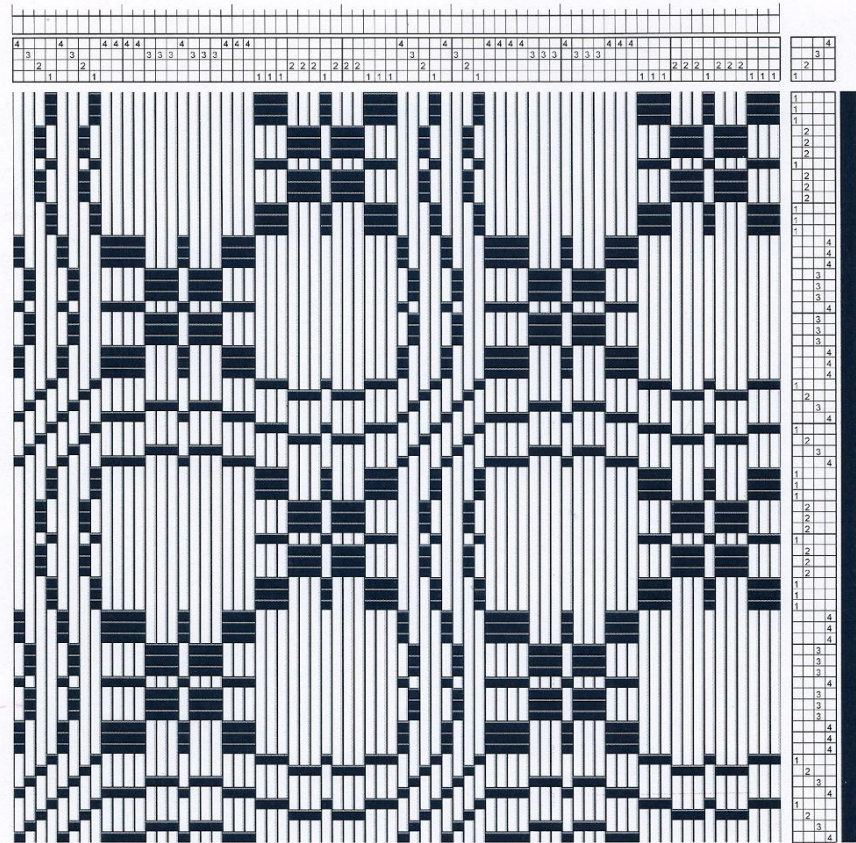




# German Linen Weavers Publications

Nathaniel Lumscher 1708

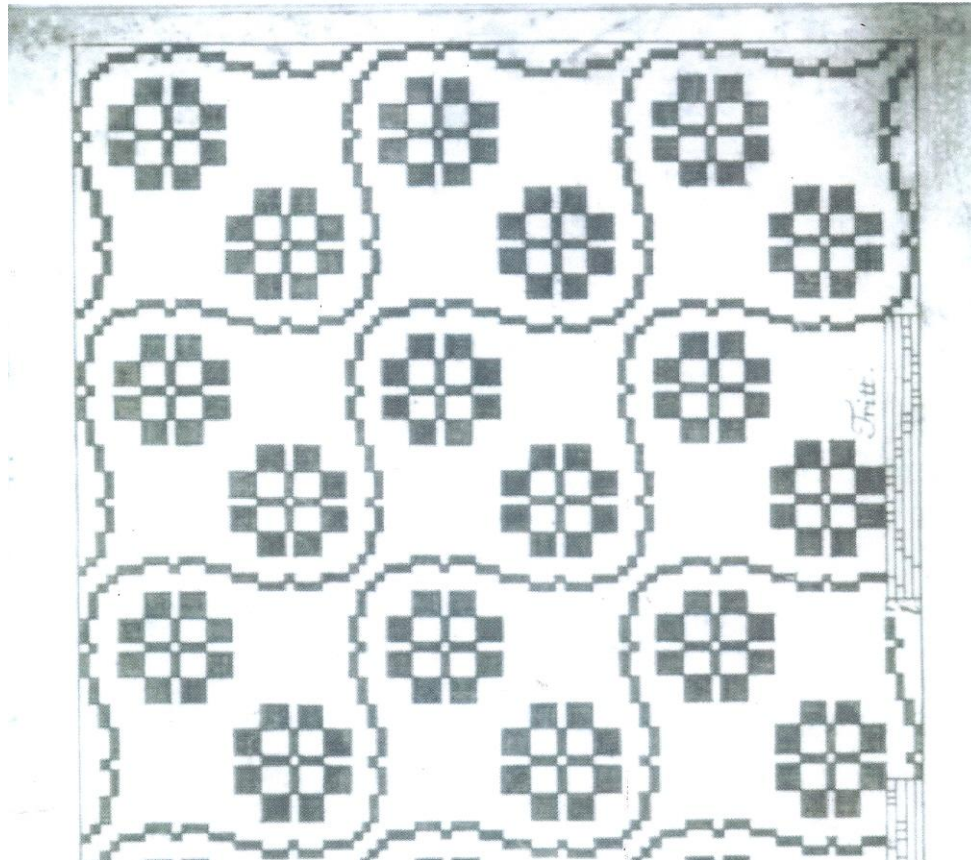
Profile Drawdown - Star Motifs - Woven As Drawn In





# Johann Michael Kirshbaum 1771

Profile Drawdown - Rose Fashion



# Provenance

## *Of Coverlets -*

- Margaret Green Ervin Wiseman
- Probably prior to marriage in 1895
- Moore County, Tennessee
- Woven as Drawn In
- Single-ply red wool & single-ply natural cotton

# Provenance

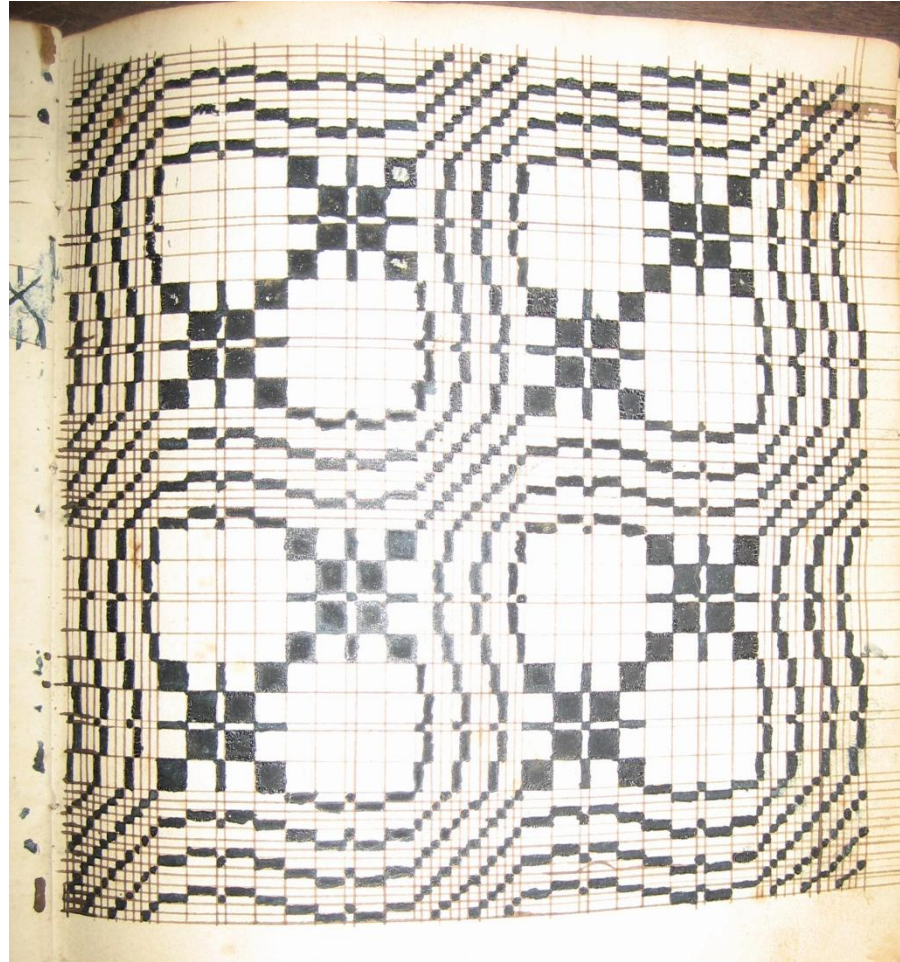
- *Textile Art from Southern Appalachia*
- Rachel Blakemore McLin
- Early 19<sup>th</sup> century
- Jonesborough, Tennessee
- Woven as drawn in
- Blue, brown & coral wool with natural cotton

# Provenance

- *Frances Goodrich's Brown Book of Weaving Drafts* - recorded drafts of coverlet found in North Carolina and eastern Tennessee in the late 19<sup>th</sup> century
- Drafts written on strips of paper
- Snake's Trail rug attributed to Martha Owenby
- Woven as drawn in



# PA German Weaver - Berks County

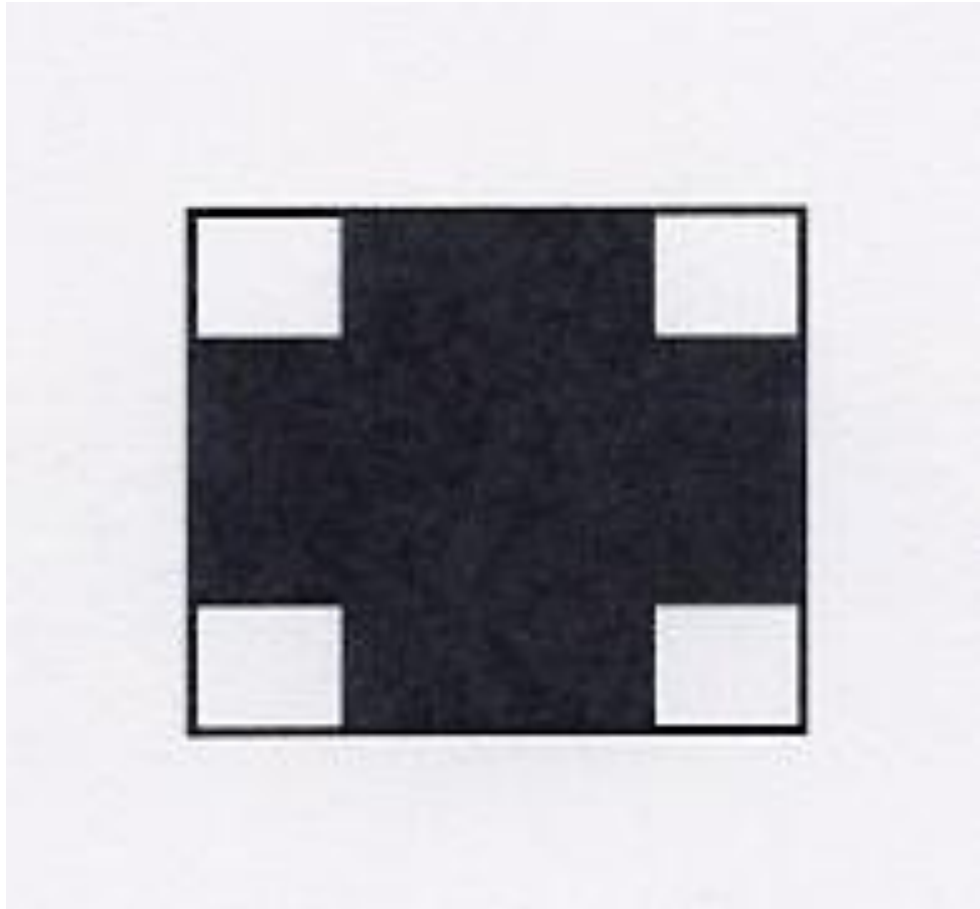


# Dog Paw

Names used in Pennsylvania  
German manuscripts:

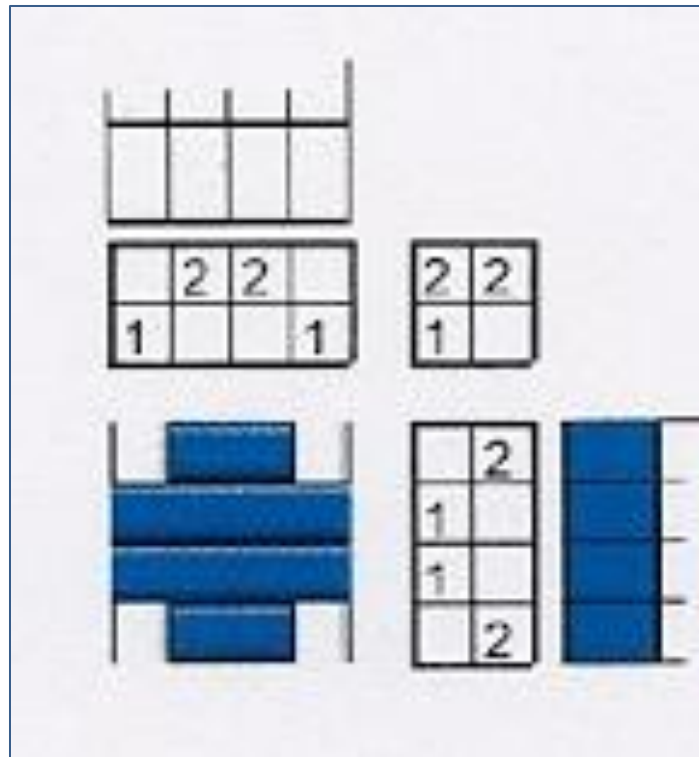
- Dog foot
- Dog Pote (Pfote = paw)
- Rose Cording
- Half Double Coverlet
- No. 3

# Cross Motif

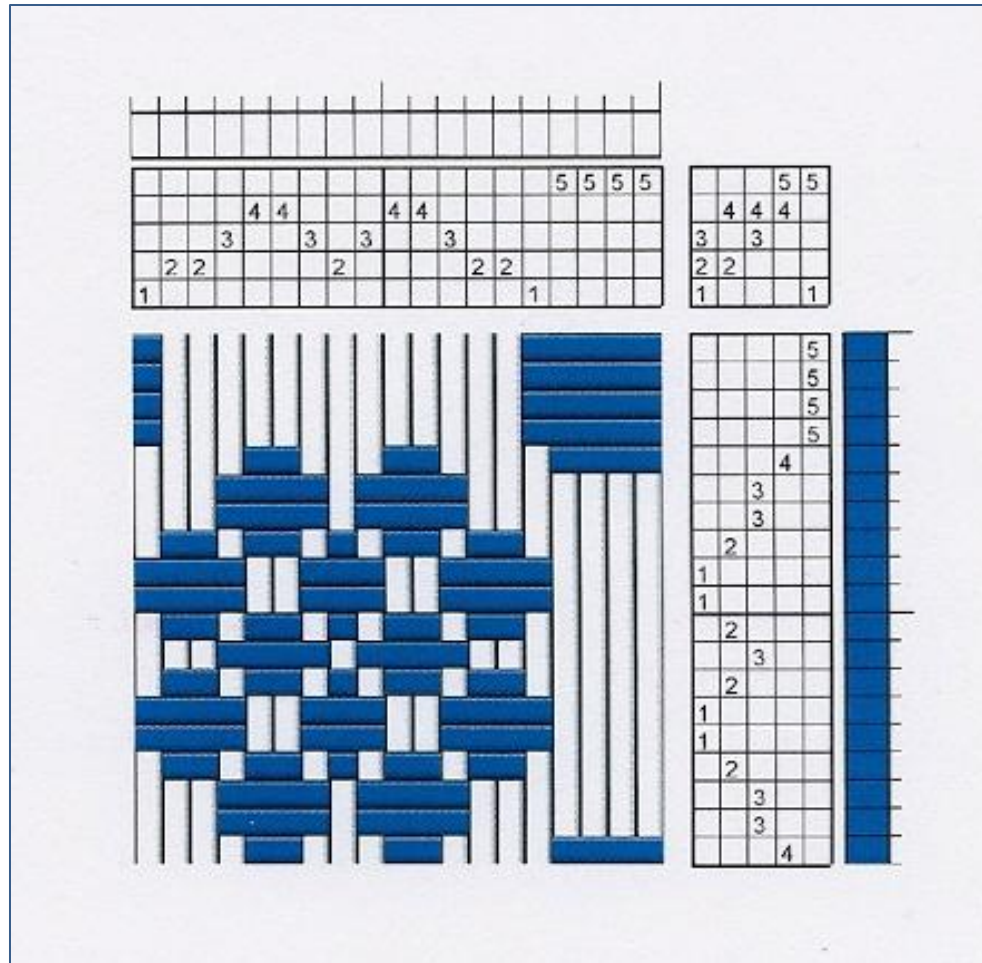




# Combined Blocks



# Profile: Dog Paw/Sorrel Blossom

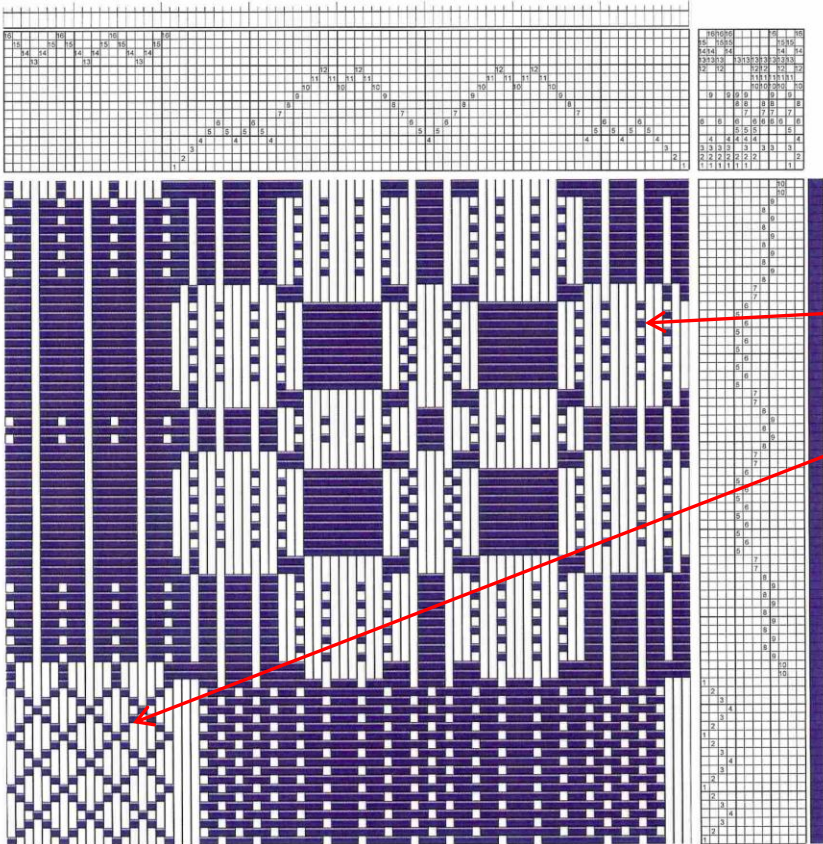


# Dog Paw Coverlet





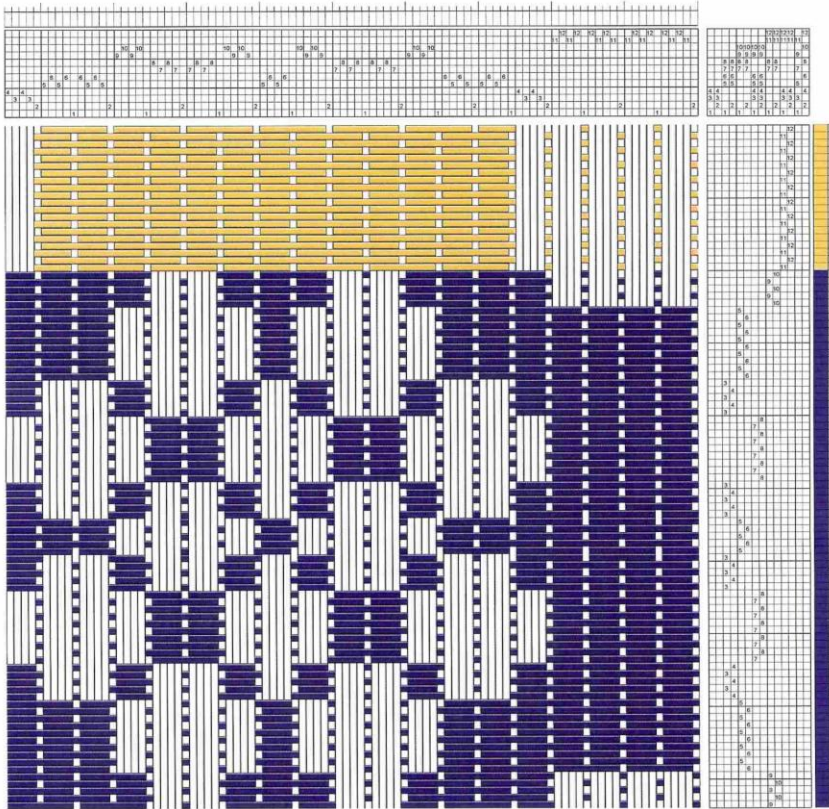
# Drawdown - Dog Paw



Multiple weave structures used:

- Tied Beiderwand
- Point twill

# Tied Beiderwand





# Double weave



Owned by the National Museum of the American Coverlet



# Another Double Weave



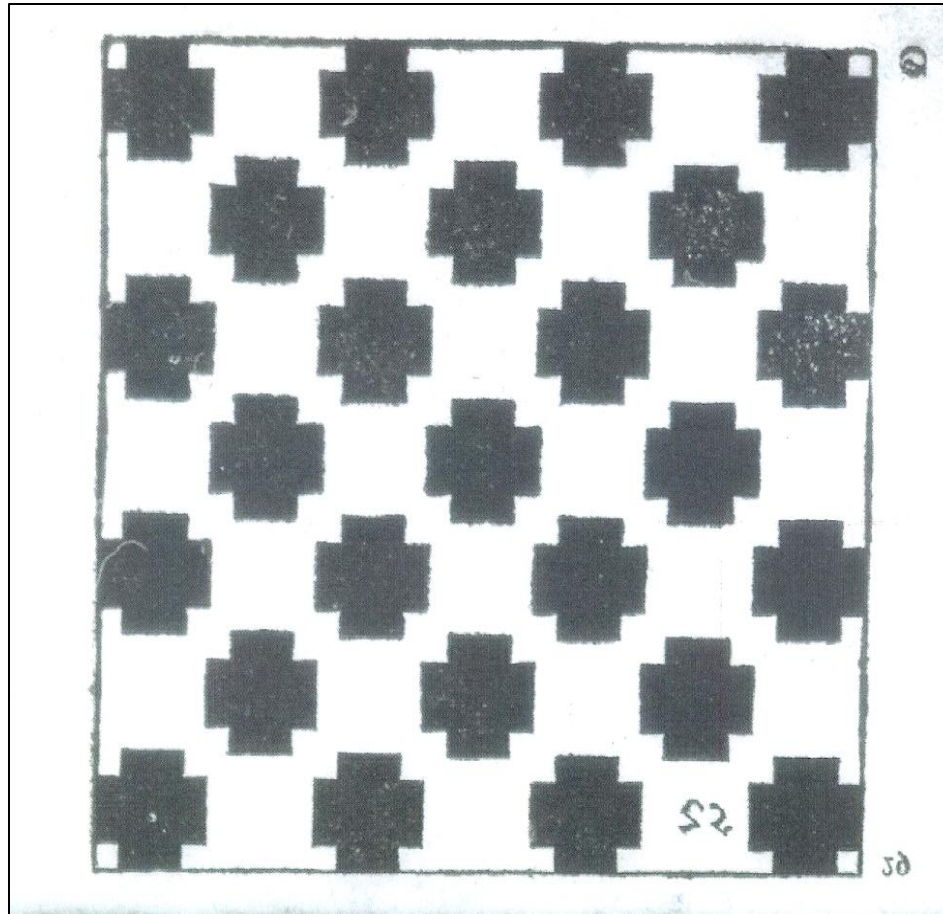
Owned by the State Museum of Pennsylvania



# Corner Block - Figure & Fancy Coverlet

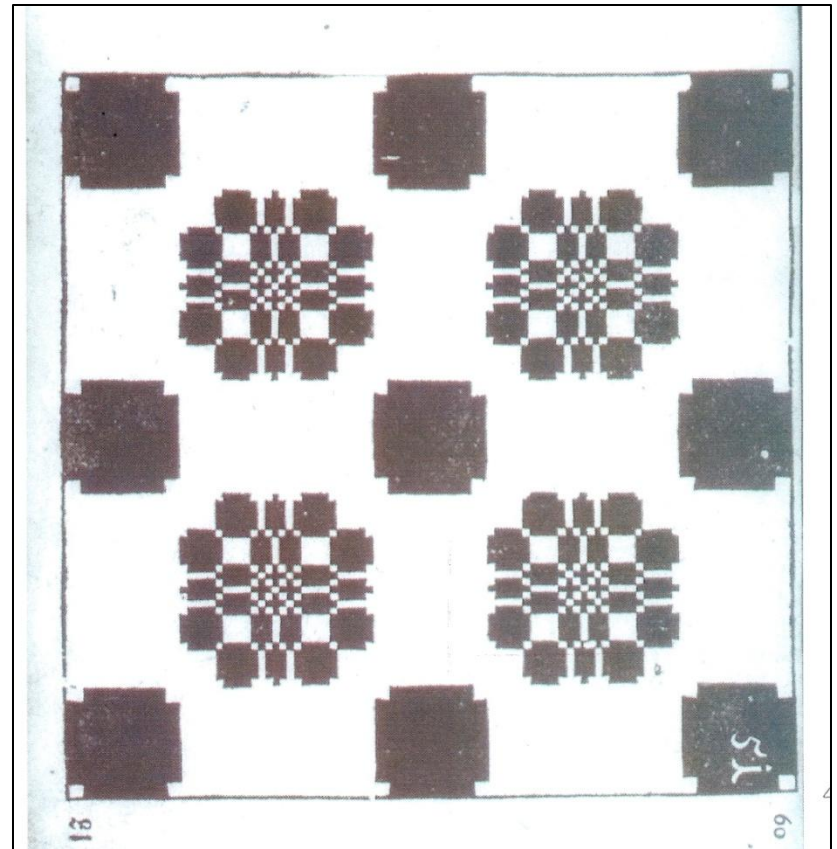
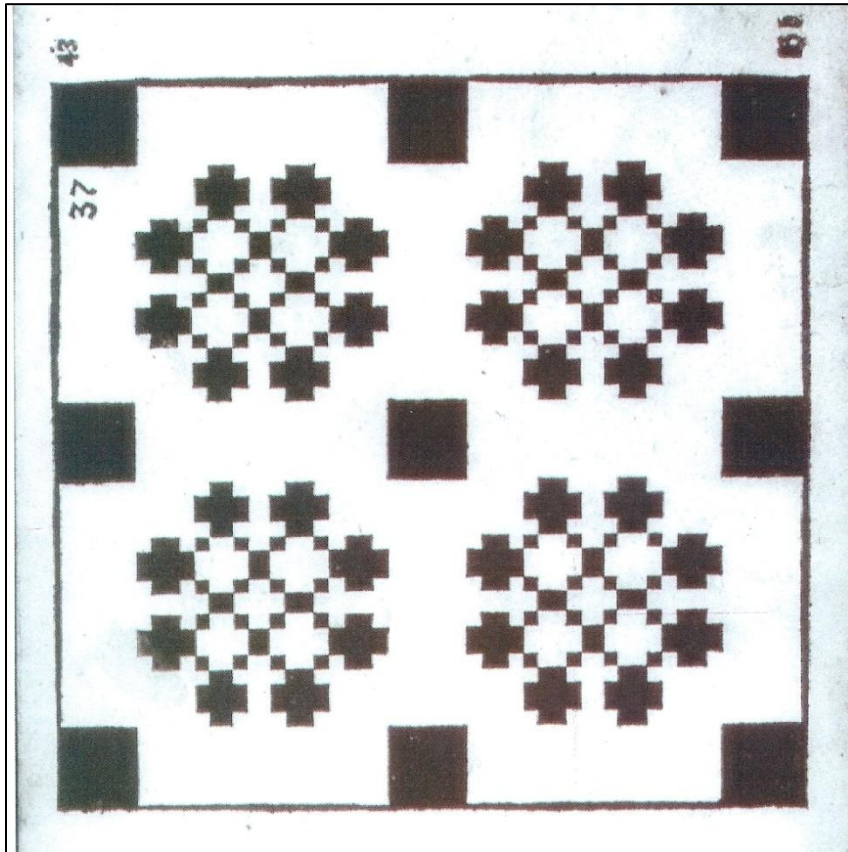


# Provenance Johann Michael Frickinger – 1767 – German Linen Weaving





# Frickinger - Developing Pattern



# Pennsylvania German Manuscripts

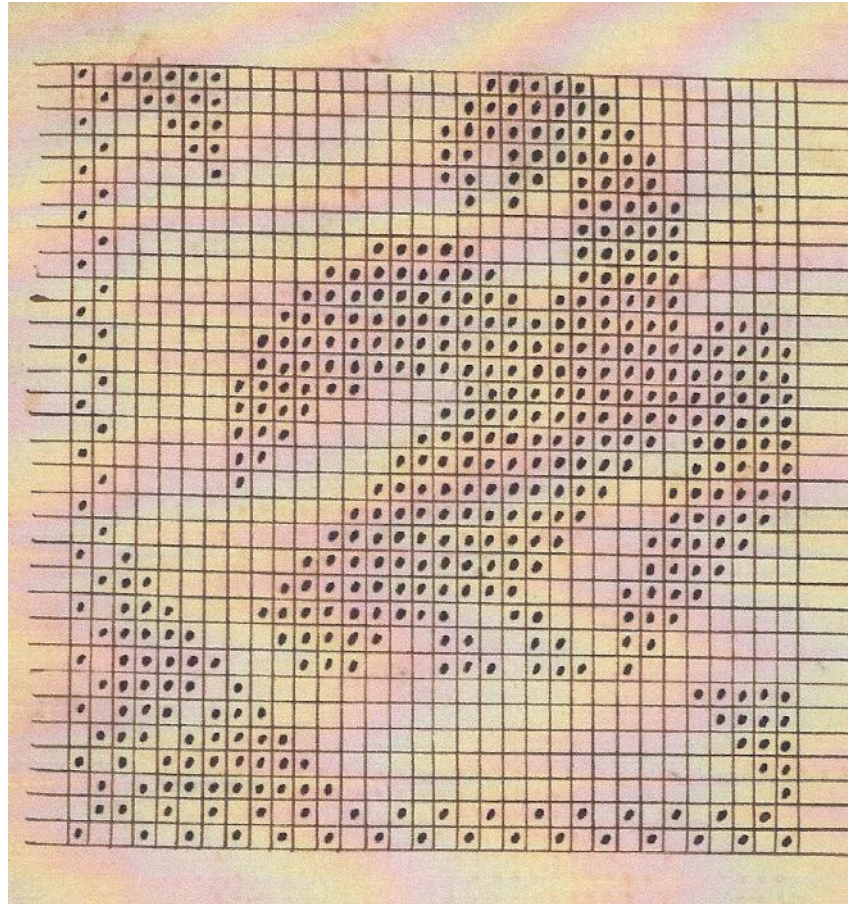
- Westmoreland County - David Bender - 1846
- Adams County - Christian Frey - 1833-34
- Union County - Jacob Angstadt - 1834
- Benjamin Endy - Berks County - 1829
- Lebanon County:
  - John Smith - 1818
  - Joseph Capp - 1830
  - Cyrus Uhler - 1830
- Lancaster County - Heinrich Leisey

# Eagle





# Combined-Blocks





Private Collection, Photographed by Ron Walter

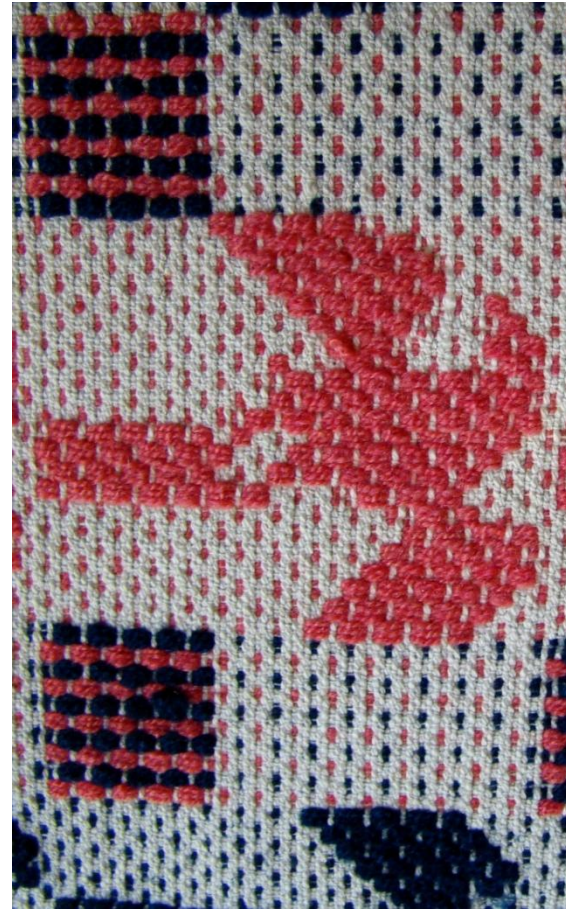




Chris & Richard Jeryan Collection, Photographed by Ron Walter

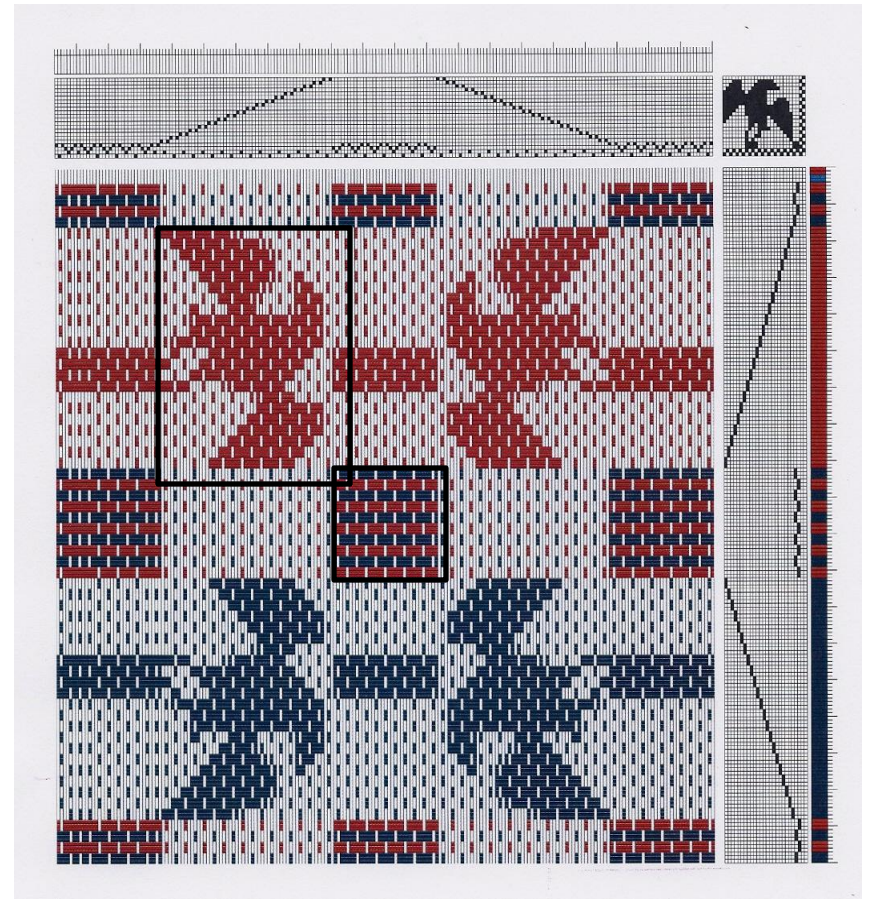
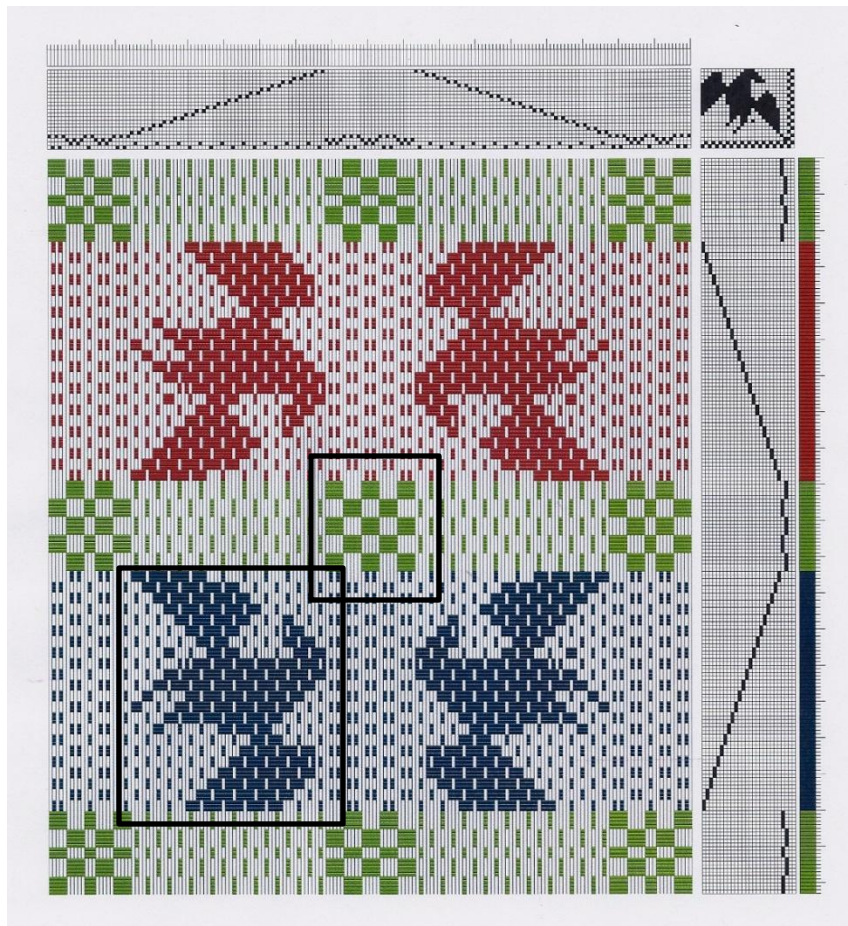


# The Eagles





# Similar Eagles



# View of the Tie-Ups







Kitty Bell & Ron Walter Collection, Photographed by Ron Walter



# Close-Up



Kitty Bell & Ron Walter Collection, Photographed by Ron Walter

# Drawdown of Pattern





# Drawdown of Pattern



# Drawdowns - Electronic Reps

Extant Coverlet

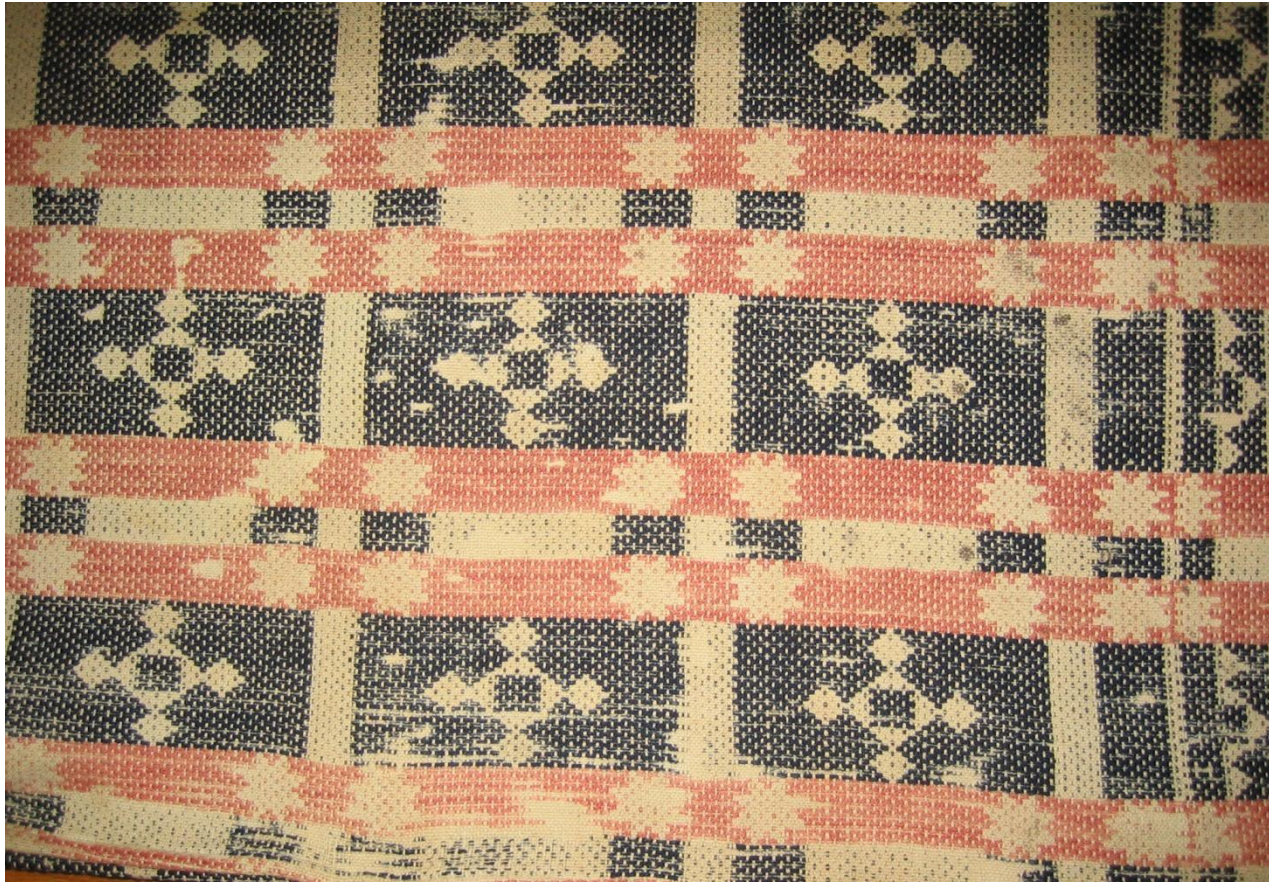


John Smith's Manuscript





# Turtle Shell Coverlet



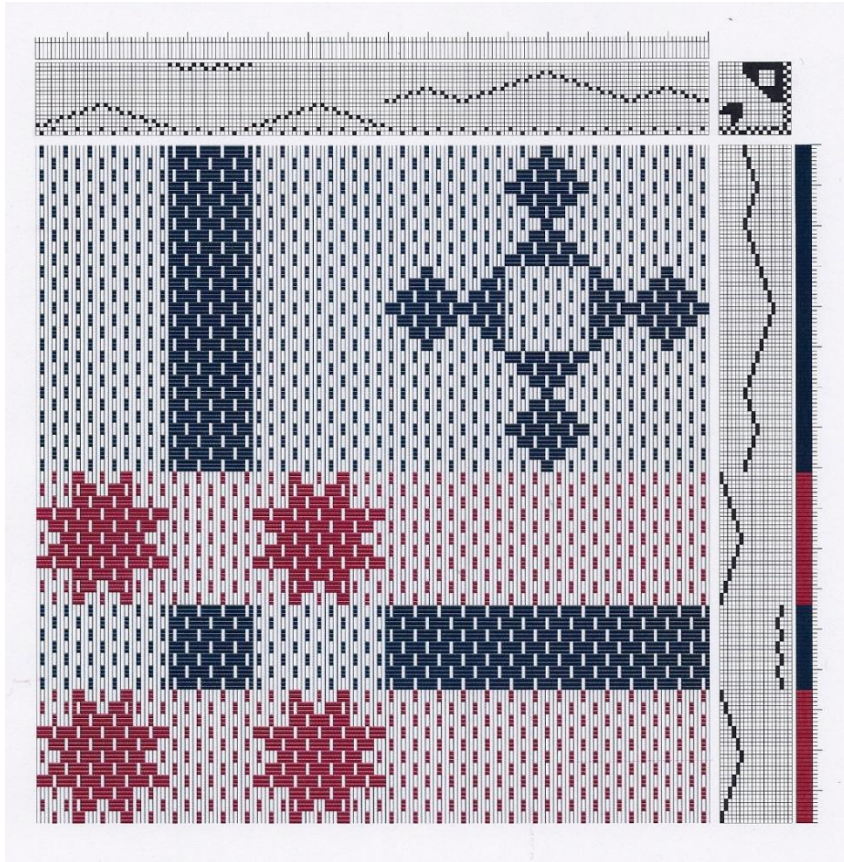


# Pattern Name

Christian Frey - "No 11, Turtle  
Shell, Half Double Patterns"

Henry Small - "Turchel Shell No  
14"

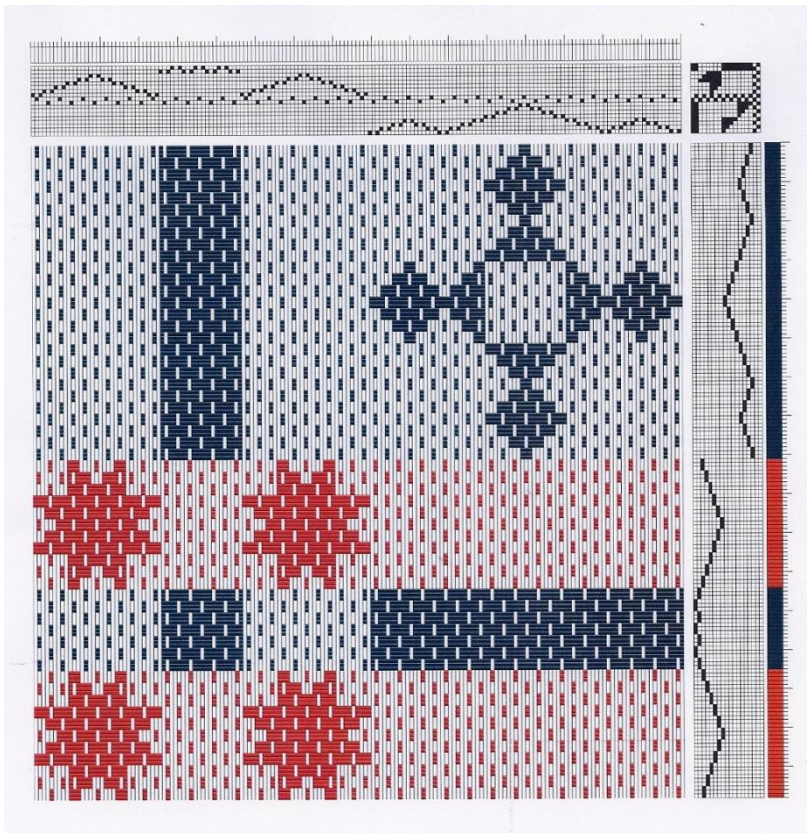
# Pattern Motifs - Combined Blocks



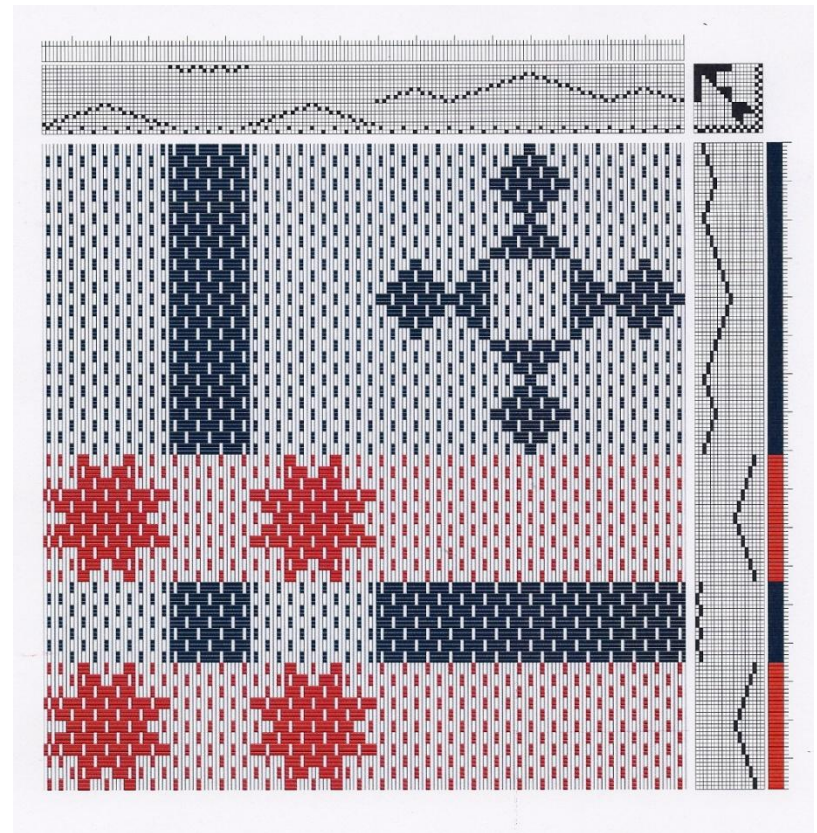
- Turtle Shell - 5 diamonds
- Four Stars

# Pennsylvania German Provenance

Christian Frey's Turtle Shell



Henry Small's Turchell Shell





# Geometric Coverlets with Animals

- Some have various traditional names for the same patterns.
- Others described by motif.
- Examine individual motifs to see block formation.
- Provenance provided through secondary or primary sources.