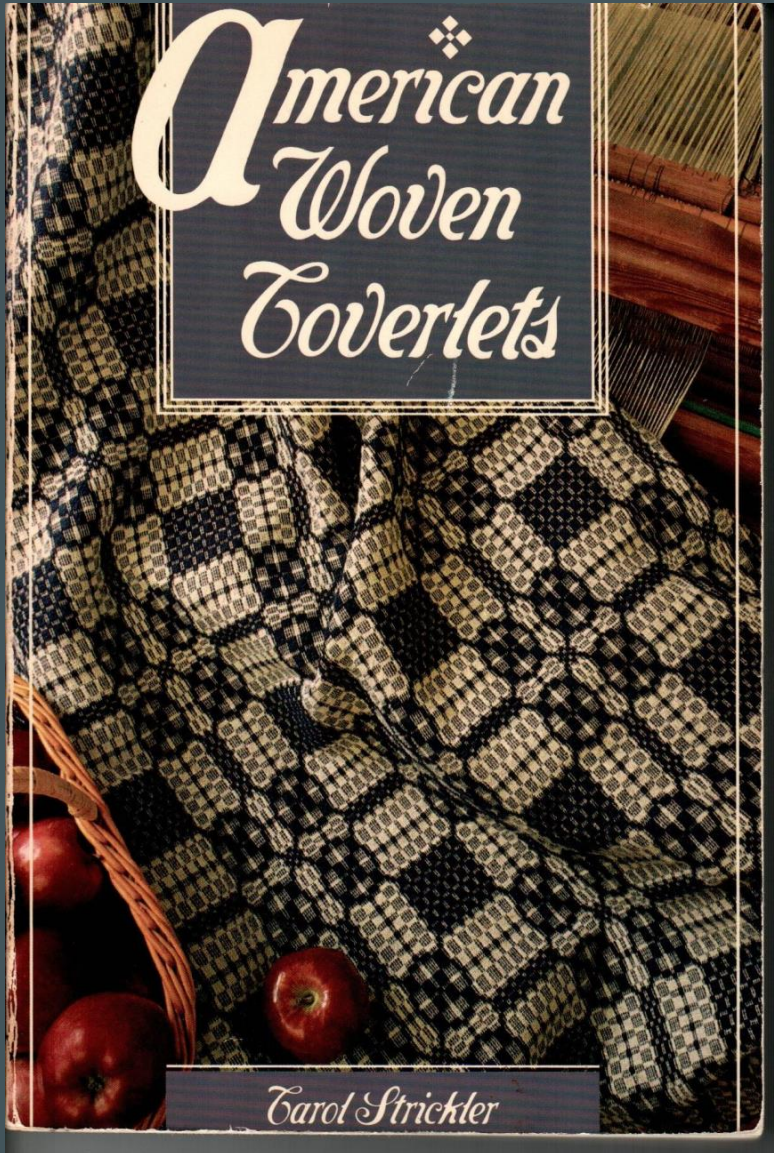


THE CAROL STRICKLER COVERLET COLLECTION

Coverlet College 2019

October 22, 2019

Gay McGeary



Carol's Introduction

Carol's Portfolios of Coverlets



Carol & Her Daughter Janet



THE COLLECTION

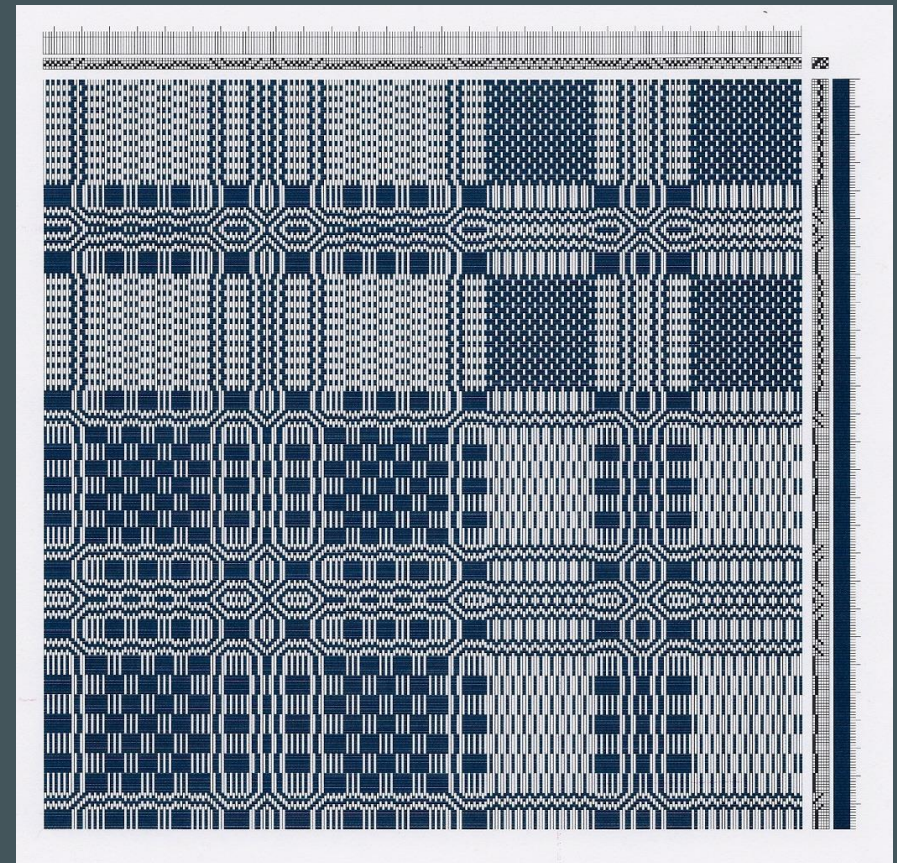
OVERSHOT COVERLET



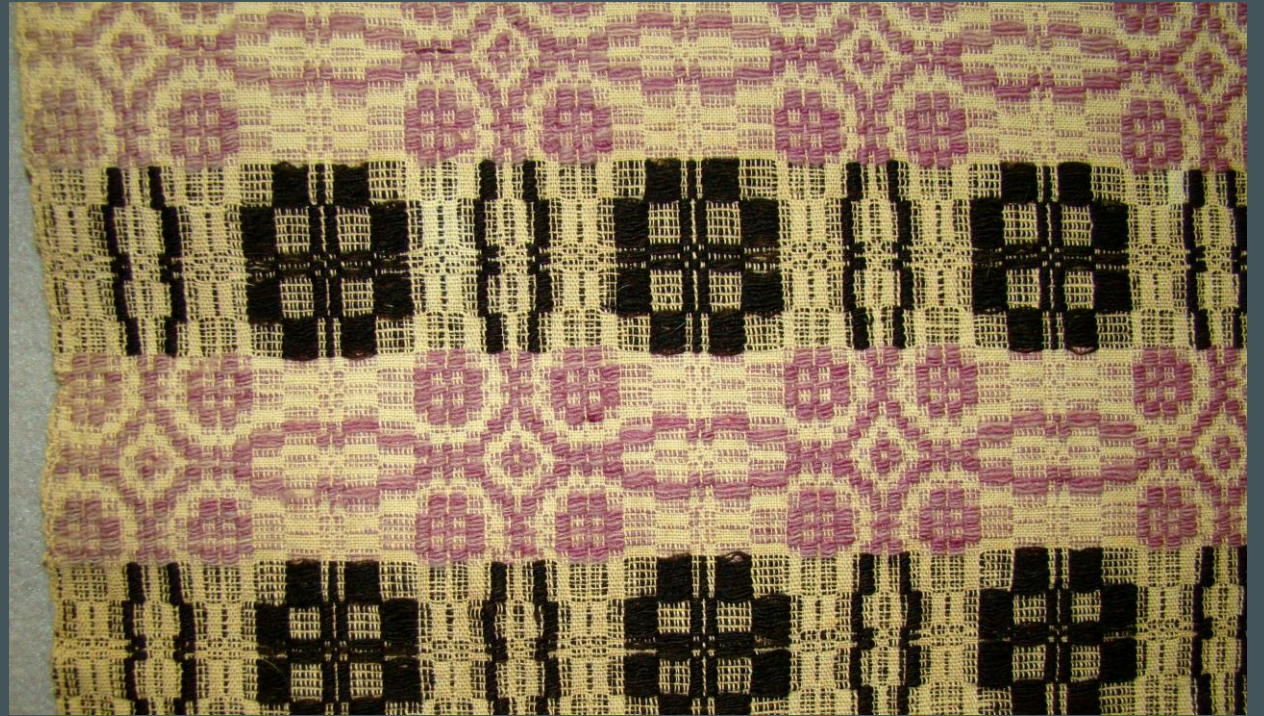
TWO PATTERNS ONE COVERLET



Coverlet Fragment

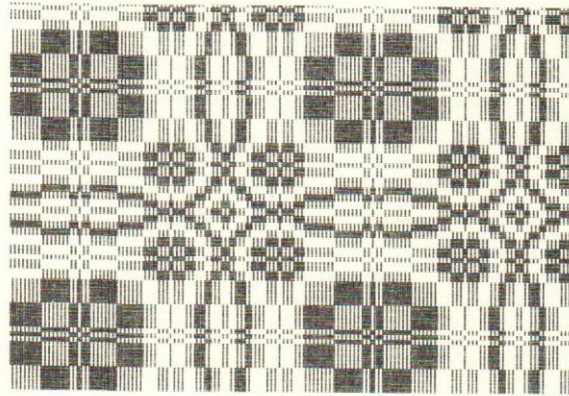


Overshot – Whig Rose

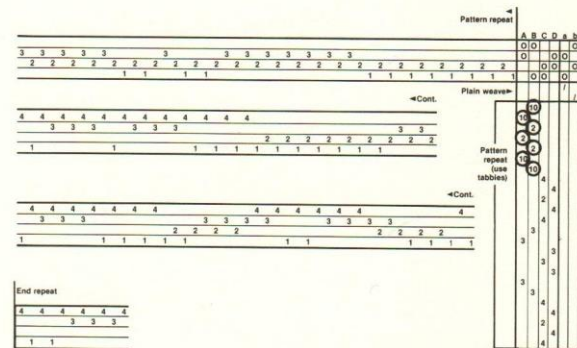


Carol's Analysis

FOUR-SHAFT OVERSHOT WEAVES



See also page 40, top center (lavender and black pattern).



TIE-UP: Standard
TREADLING: Rose-fashion
146 ends in pattern repeat.

Four-shaft overshot

Whig Rose. A large rose, framed by four small roses and surrounded by an indented ring.

WARP COUNT: 42 e.p.i.

WARP: Fine single-ply (Z-twist) cotton, very yellowed natural.

WEFTS: *Tabby*: Same as warp. *Pattern*: Single-ply (Z-twist) wool, in black and an uneven (mostly faded) light purple (see notes).

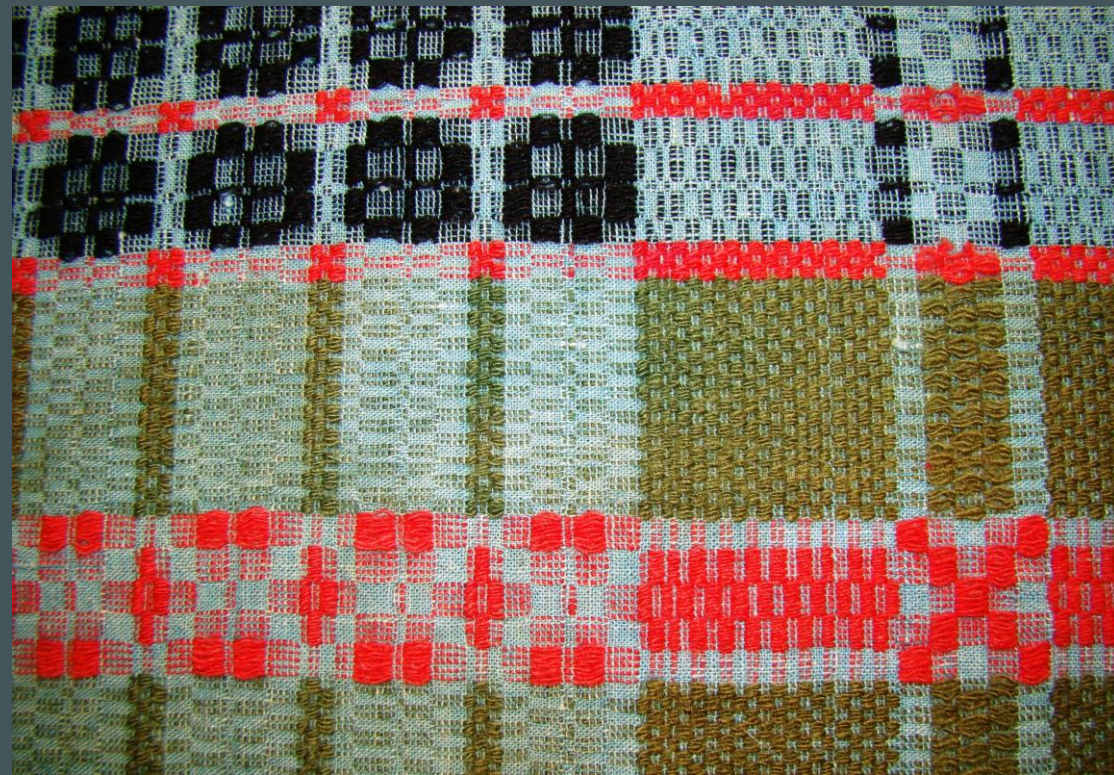
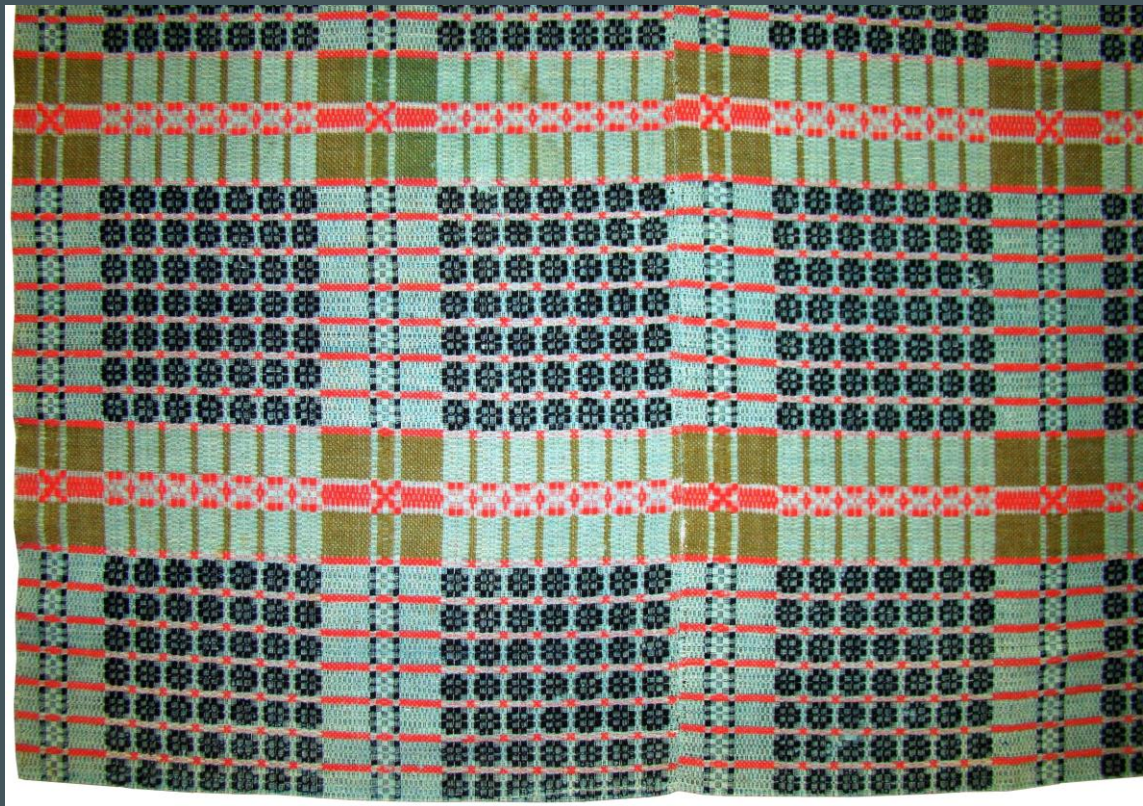
SIZE: 86" wide by 95" long (218 x 241 cm); 24 by 27 repeats.

NOTES: This coverlet represents an uncommon use of color in a common pattern. The design is similar to Hall pp. 136-37, Burnham #314, and Atwater drafts #69 and 91. It has also been one of the most popular overshot patterns for 20th-century reproduction coverlets.

The coverlet is in three panels (two seams, hand-stitched in a running stitch with narrow seam allowances, well matched except that one panel is reversed). One repeat of the pattern near the end of one panel is erroneously treadled star-fashion (as a Lover's Knot), instead of rose-fashion (as Whig Rose). The coverlet is in fair condition; it is worn, very faded in the purple areas, and yellowed by the black dye. The fading is slightly less noticeable toward one corner, and tiny hidden traces indicate that the purple was originally a bright red-violet or mauve, a possible indication of aniline dye and a post-1860 date.

References to
Hall, Burnham
and Atwater

Overshot – Forty-Nine Roses

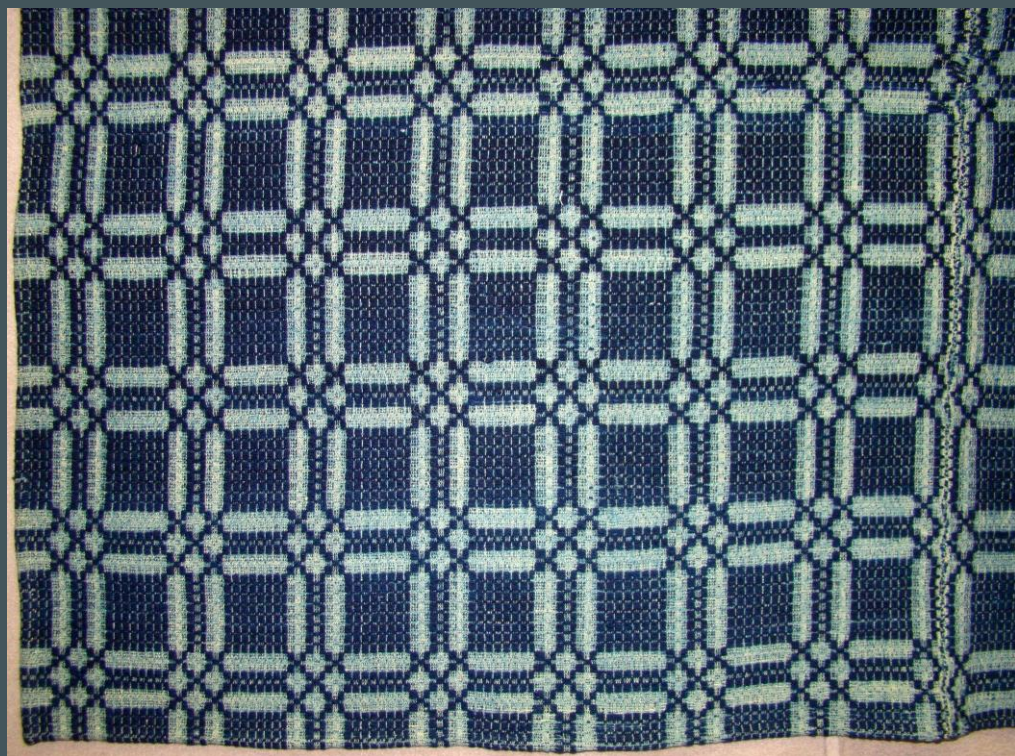


Overshot Pine Bloom





Overshot – Five Stars with Table

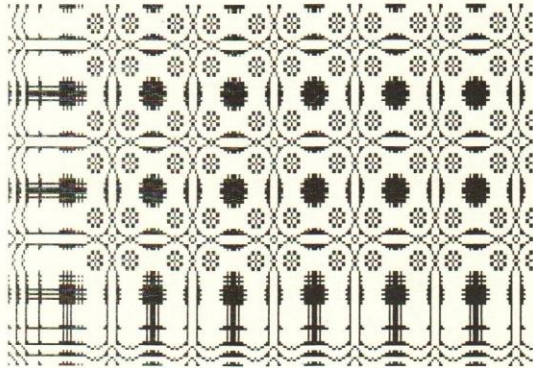


Summer & Winter Single Snowball & Four Roses with Tree Border



Carol's Analysis

SUMMER & WINTER WEAVES



See also pages 8, 36, 37, and 81.

BLOCK TIE-UP: Combined
BLOCK TREADLING: As drawn in
43 units in pattern repeat; 55 units in border.

Five-block

Single Snowball & Four Roses, with Pine Tree border. A solid fancy snowball, flanked by four roses and surrounded by an indented ring. The border is made of triple-trunked pine trees, which are extensions of the snowball.

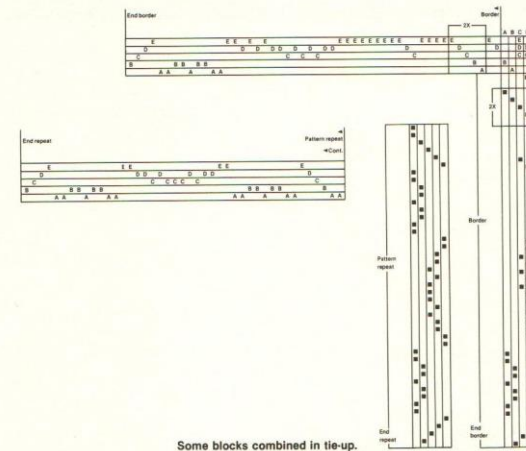
WARP COUNT: 22 e.p.i.

WARP: Two-ply (Z-twist S-ply) cotton, natural.

WEFTS: *Tabby*: Single-ply (Z-twist) cotton, natural. *Pattern*: Two-ply (Z-twist S-ply) wool, uneven dusky rose-red.

SIZE: 39" wide by 95" long (99 x 241 cm); 4 repeats and one border by 11 repeats and one border.

NOTES: This pattern is like a Whig Rose, but with a Snowball center. It is similar to Swygert p. 211, Atwater draft #225, and other double weave designs. The piece is one panel (half a coverlet). The ends are narrow plain-weave hems; the sides are selvages. It is in good condition, except for wear on the hems and at a few other small spots.



Float Work Diamond

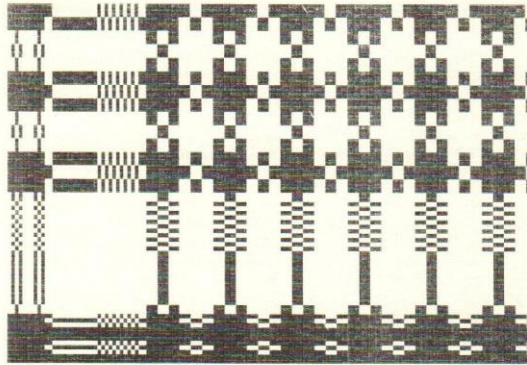


Block Twill



BLOCK TWILL IN THE NINE-PATCH PATTERN

DOUBLEFACED TWILL WEAVE



See also pages 27, 40, and 81 (on page 40 this is the navy-and-white coverlet).

BLOCK TIE-UP: Direct
BLOCK TREADLING: Nearly rose-fashion
18 units in pattern repeat; 37 units in border.

Four-block doublefaced 3/1 twill

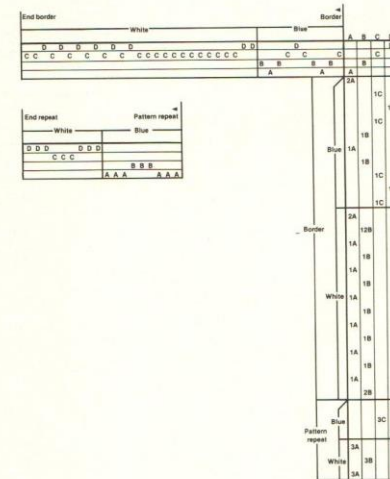
Nine-Patch, with Pine Tree border. Solid squares of color, alternated with nine-part squares. The border pine trees are extensions of the dark stripes and bands.

WARP COUNT: 24 e.p.i.

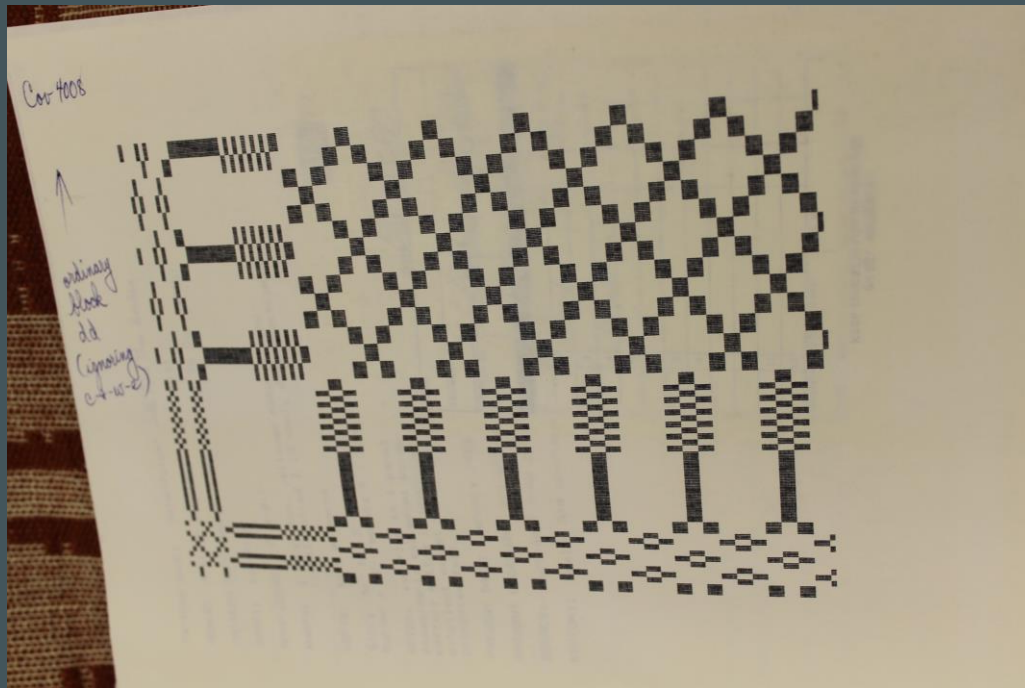
WARPS & WEFTS: *Light*: Four-ply (Z-twist S-ply) cotton, yellowed natural. *Dark*: Tightly plied two-ply (Z-twist S-ply) wool, dark blackish blue.

SIZE: 36" (91 cm) and one 5" (13 cm) fringe wide by 79" (200 cm) and one 5" (13 cm) fringe long; 8½ repeats and one border by 22½ repeats and one border.

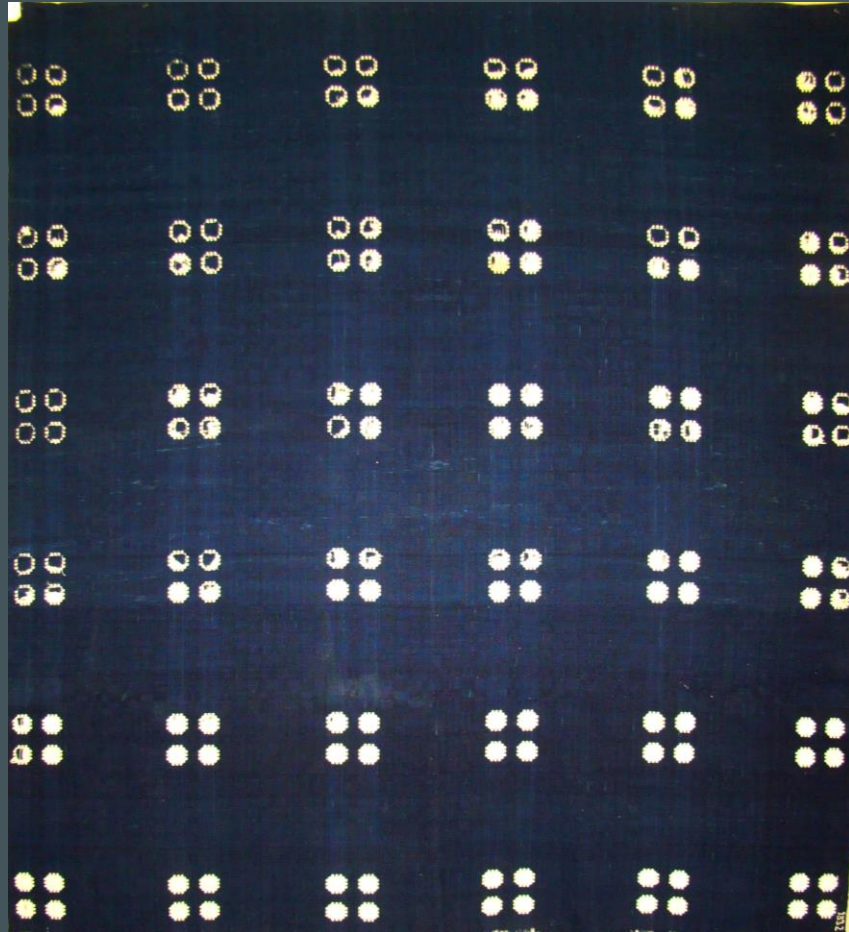
NOTES: The piece is one panel (half a coverlet). The top is a narrow hem; the seam side is selvage; the border side is unanchored weft-loop fringe (all wefts); the bottom is unanchored warp fringe (all warps). The panel is in excellent condition, except for a 7" (18 cm) streak of holes along an apparent middle crosswise fold. The dealer from whom it was acquired had purchased it in Ohio.



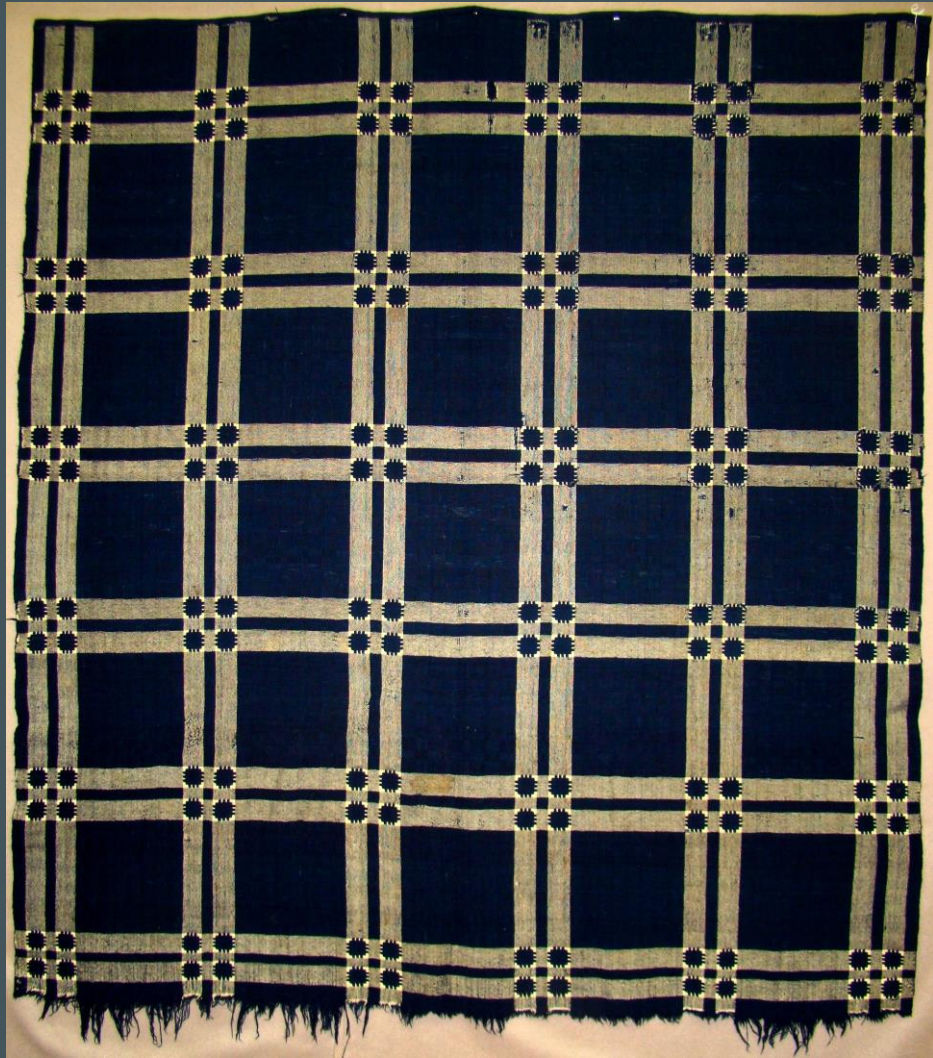
NINE-PATCH WITH CAROL'S DRAWDOWN



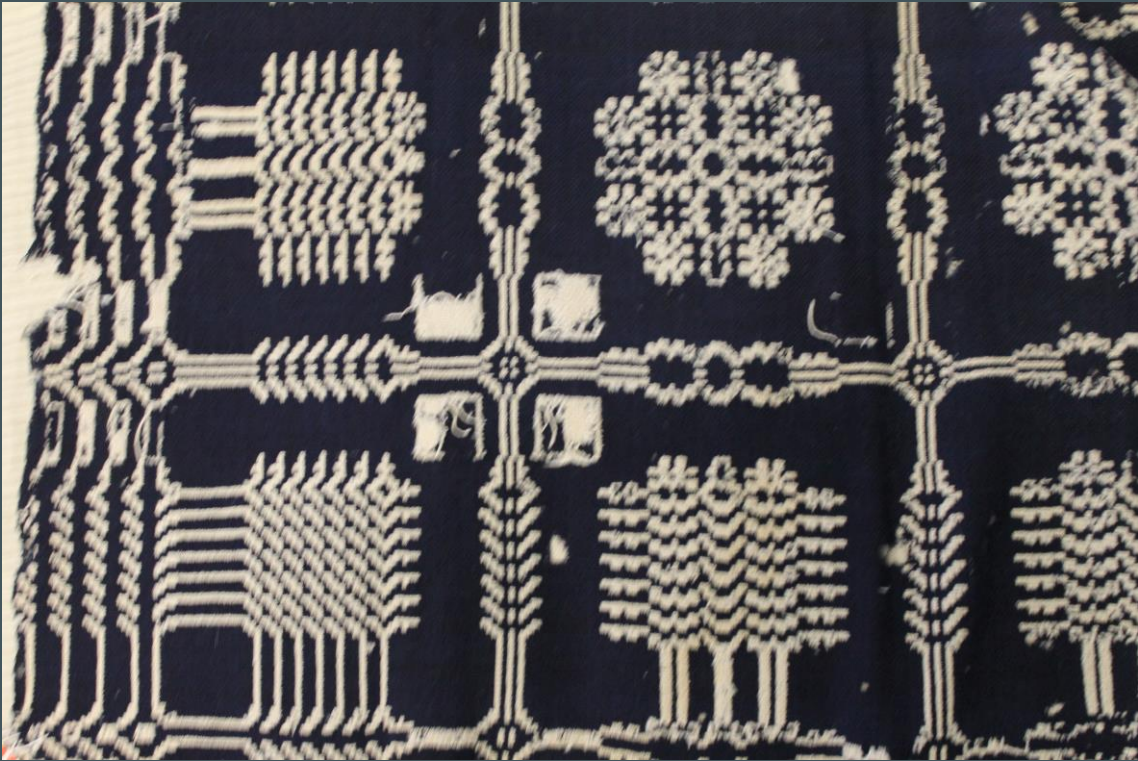
Double Weave Four Snowballs

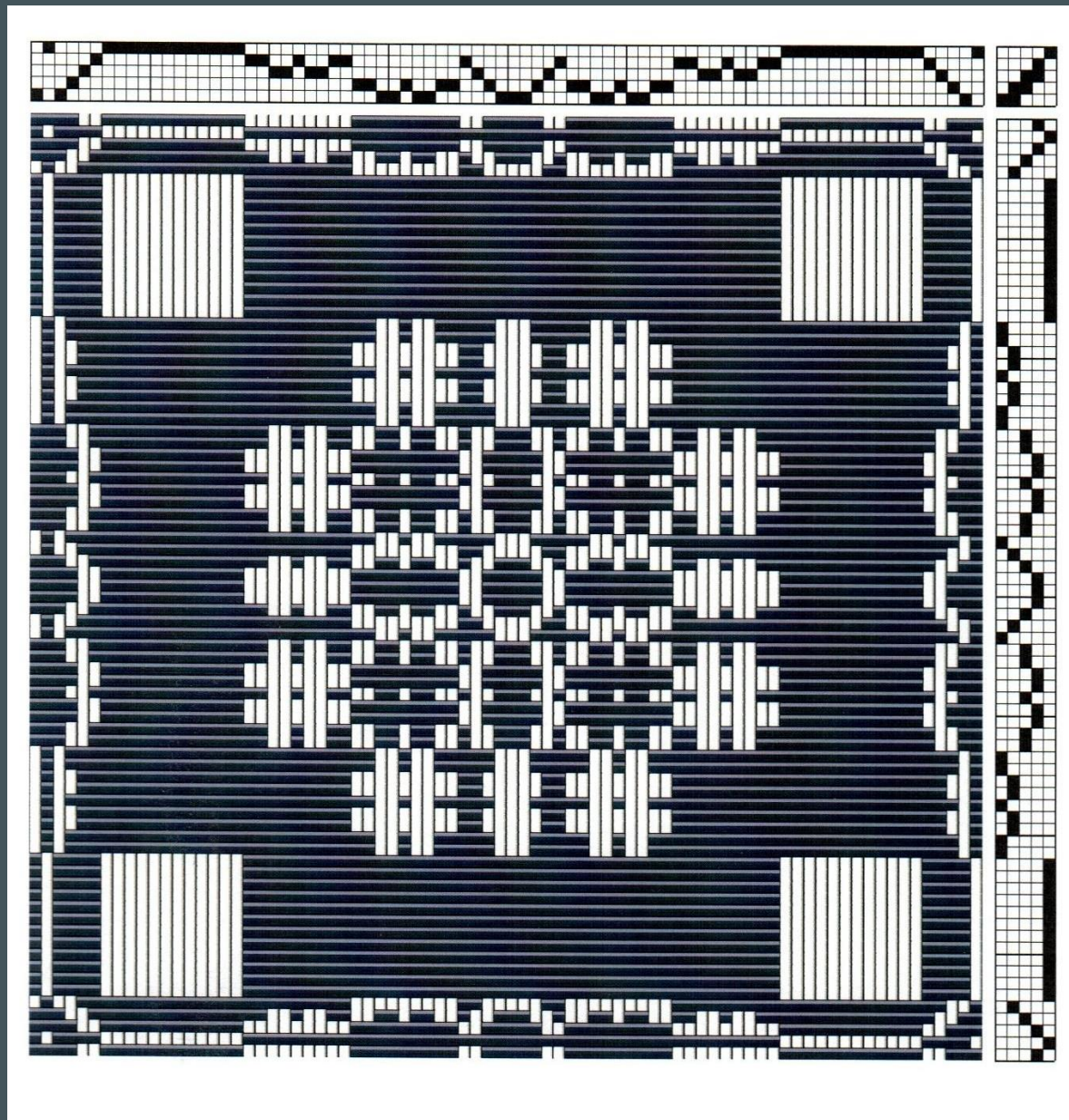


Reverse Side



SORREL BLOSSOM VARIATION



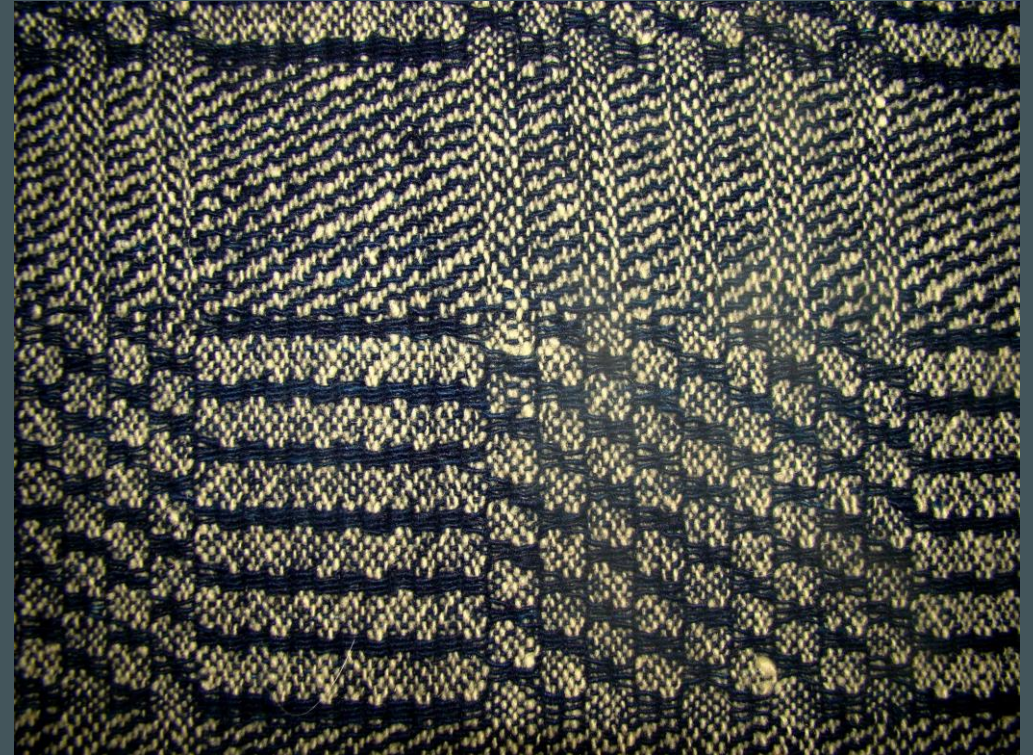
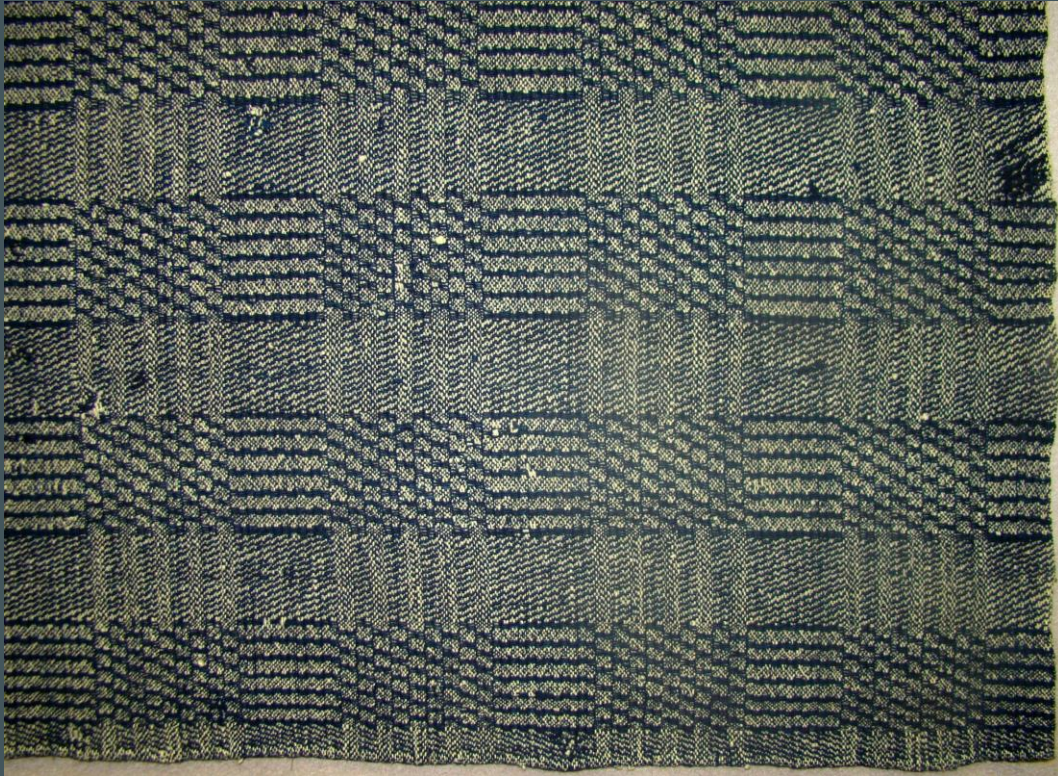


ANALYSIS WITH DRAWDOWN

Double Weave Star of Bethlehem



M'S & O'S – ALL WOOL



Strawberries with Bird & Rose and Eagle Border





Strawberries, with Bird & Rose and Eagle borders.

WARP COUNT: 33 e.p.i. (22 ground, 11 tie-down).

WARPS: *Ground and tie-down*: Uneven single-ply (Z-twist) cotton, yellowed natural.

WEFTS: *Tabby*: Same as warps. *Pattern*: Two-ply (Z-twist S-ply) wool, unevenly faded coral red and avocado green.

SIZE: 78" (198 cm) and two fringes wide by 81" (206 cm) long; 4 repeats and two borders by $5\frac{1}{4}$ repeats and one border.

NOTES: This coverlet is in two panels (one seam, well matched). The top and bottom edges have been torn off. The top edge probably had a narrow hem and the bottom edge was likely a warp fringe, made with both warps. The sides are the remains of a $2\frac{1}{2}$ " (6 cm) loop fringe of pattern wefts. The coverlet is in fair condition, whole but worn and very dry.

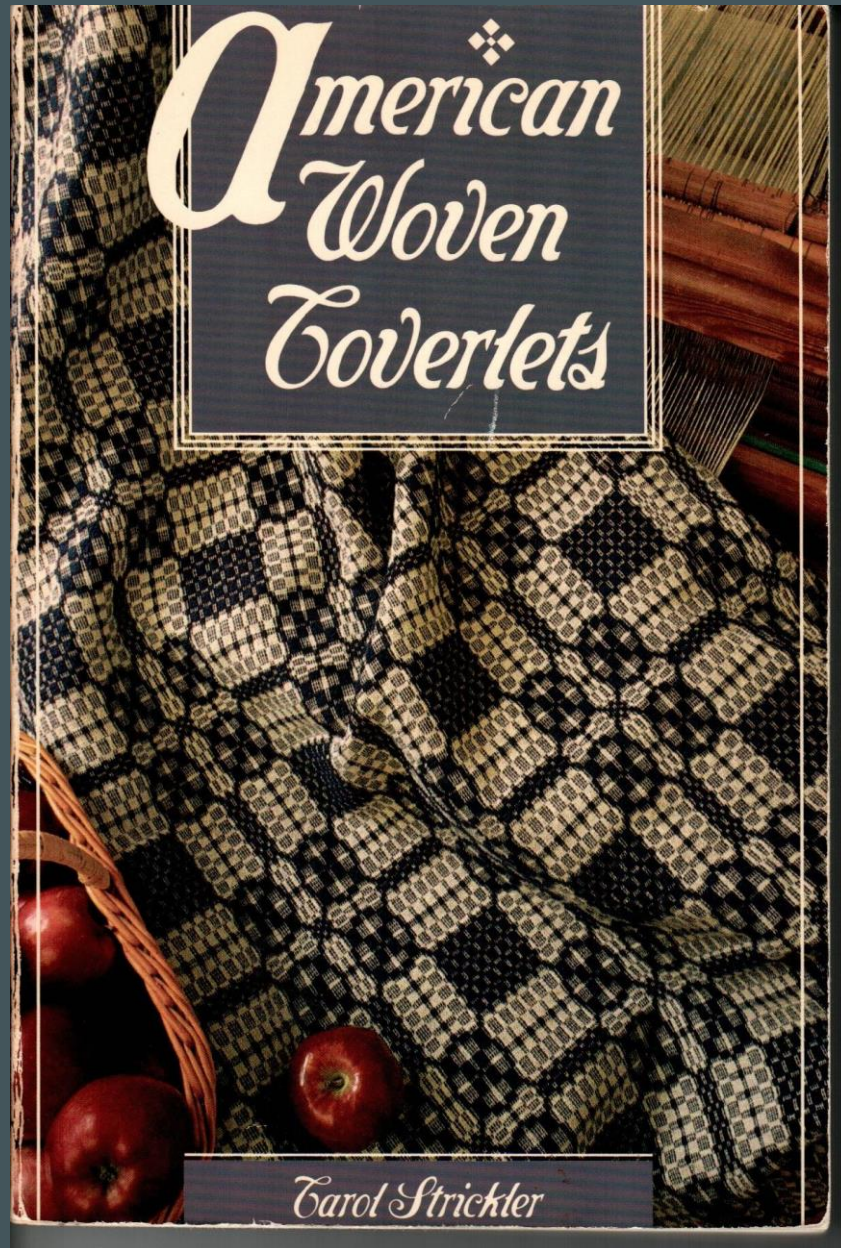
The corner signature panel reads JOHN LONG / HOLMES COUNTY / OHIO / 1849. The eagle border contains the initials SP. *Checklist . . .* (p. 82) lists John Long as weaving in Holmes County, Ohio, from 1840 to 1855. The central pattern of this coverlet is very unusual, although it has a leaf element that is common in some Bird or Eagle borders. Shortly before this coverlet was purchased, another one by the same weaver was documented in the stock of an Indiana dealer. It was identical to this one, except for color (dark blue and white), condition (excellent), and date (1854).

See also pages 40, 86, and 90 (on page 40 this is the beige, red, and green coverlet in the center).

John Long / Holmes County /
Ohio / 1849

Eagle border contains
initials "SP"

Another coverlet in same
pattern in dark blue and
white dated 1854



Carol's Contribution